

# BigPak® 45x48B SP

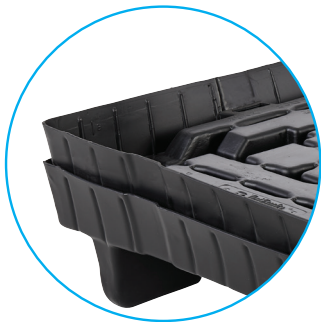
Thermoformed  
HDPE Single Sheet  
Construction

## FEATURES

- Pallet and lid are interchangeable
- Minimizes storage space, reduces shipping costs
- Lightweight for better ergonomics

## OPTIONS

- Ever-Lok® provides unit security and eliminates stretch wrapping
- Collapsible sleeves
- Wide range of stripe colors
- One or multiple stripes in 48" direction
- Leg drain holes
- Custom logos



Nestable Pallet



Interlocking Pallet Legs

### COLLAPSABLE SLEEVE OPTIONS



Fiberboard  
Z-fold



Twin-Sheet  
Thermoformed



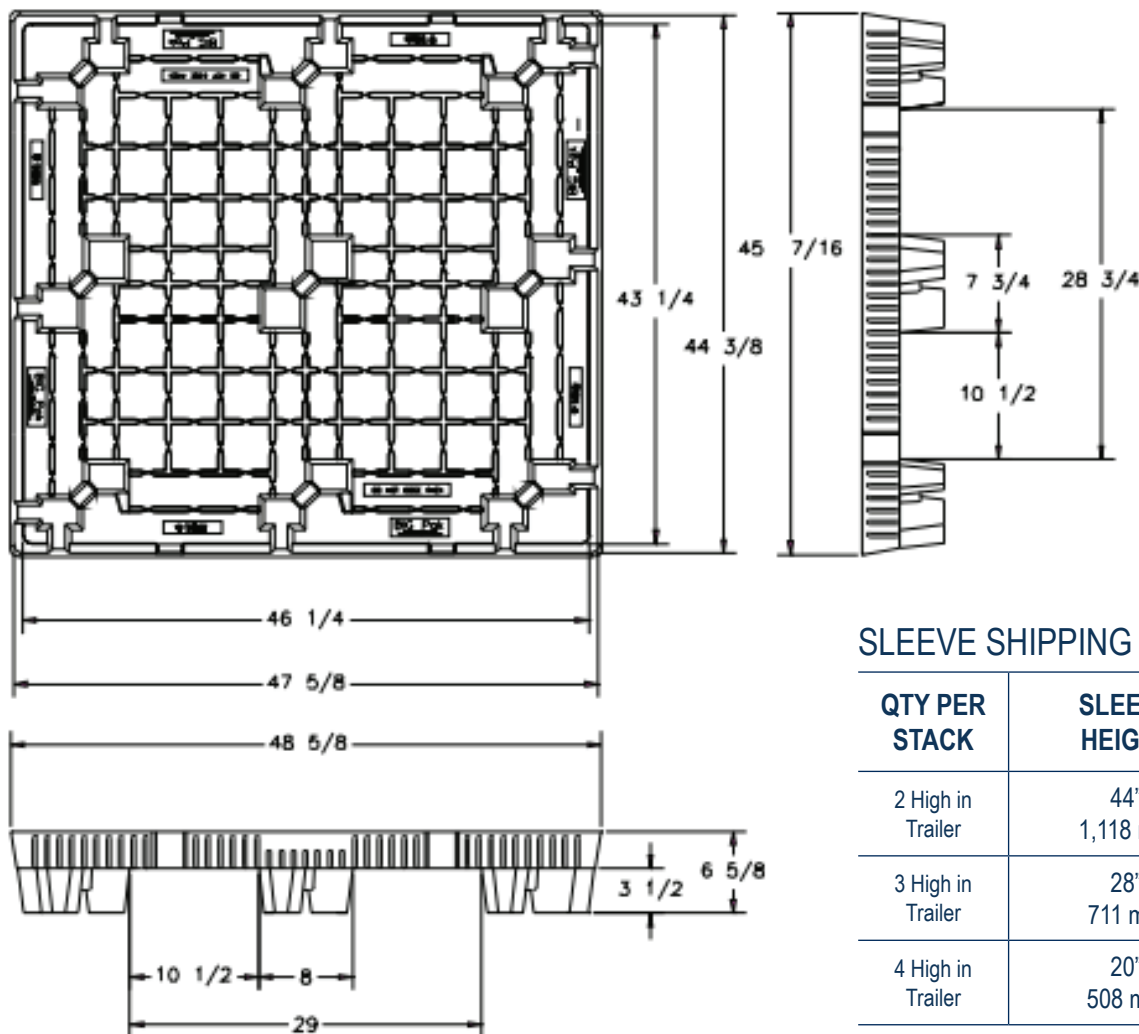
Plastic

## SPECIFICATIONS

PRODUCT	DIMENSIONS			WEIGHT AND COLOR	RATINGS		STACK HEIGHT	QTY PER STACK		QTY 53' TLD	QTY 40' SC	QTY 40' HC
	L	W	H		FORK	FLOOR		STD.	HC			
BP4548B SP Single Sheet Pallet	48.625" 1,235.08 mm	45" 1,143 mm	6.625" 168.28 mm	22 lbs 9.98 kg Black	800 lbs 364 kg	4,000 lbs 1,818 kg	100" 2,540 mm	50	54	1,400/ 28 Skids	900/ 18 Skids	972/ 18 Skids

# Big Pak® 45x48B SP

## SPECIFICATIONS



### SLEEVE SHIPPING INFORMATION

QTY PER STACK	SLEEVE HEIGHT	SLEEVE I.D.
2 High in Trailer	44" 1,118 mm	46.25" x 43.25"
3 High in Trailer	28" 711 mm	46.25" x 43.25"
4 High in Trailer	20" 508 mm	46.25" x 43.25"

## Advantages

Environmentally Friendly  
ISPM 15 Exempt  
Long Service Life



Easy  
Clean



Sanitary



Weather  
Resistant



Impact  
Resistant



4-Way Forklift  
& Forkjack Entry



Recycle

TriEnda publishes standard guidelines for its products, based on its testing standards, and, as such, these guidelines do not constitute any warranty related to each customer's individual application. The material handling industry has not standardized on test methodology and rating criteria for each individual product. All TriEnda products are sold with the understanding that the customer will validate for themselves the suitability of the product for their specific application. As each product application is unique, the customer assumes all risks associated with the determination and actual use of the pallet.



Pallet  
Buy Back  
Program

**TriEnda®**

*Upgrading the Experience™*

FOR INFORMATION PLEASE CONTACT:  
sales@trienda.com 1-800-356-8150