

# BigPak® 40x48D TP-TC

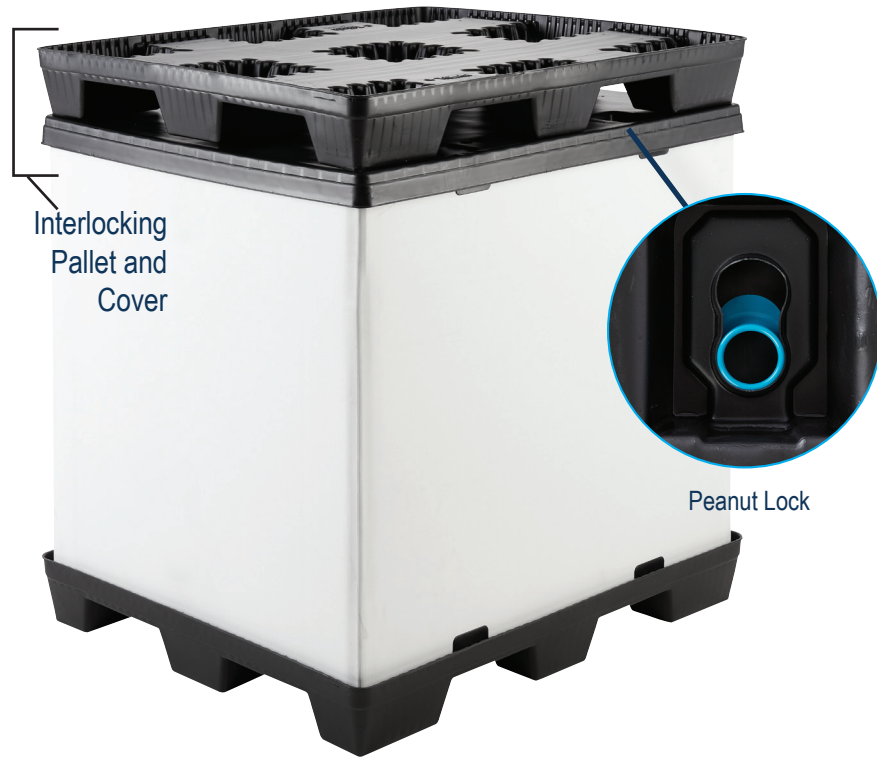
## Thermoformed HDPE Twin Sheet Construction

### FEATURES

- Peanut lock provides unit security and eliminates need for stretch wrapping
- Interlocking pallet and cover for secure stacking
- Large leg footprint
- Lower cost alternative vs. rigid alternatives

### OPTIONS

- With or without peanut lock
- Wide range of stripe colors
- One or multiple stripes in 48" direction
- Leg drain holes
- Custom logos



#### COLLAPSABLE SLEEVE OPTIONS



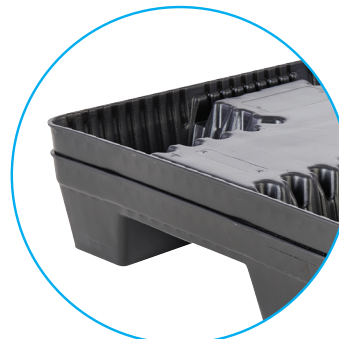
Fiberboard  
Z-fold



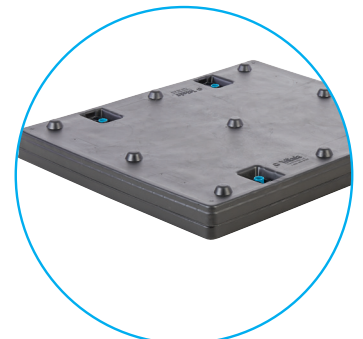
Twin-Sheet  
Thermoformed



Plastic



Nestable  
Pallet Design



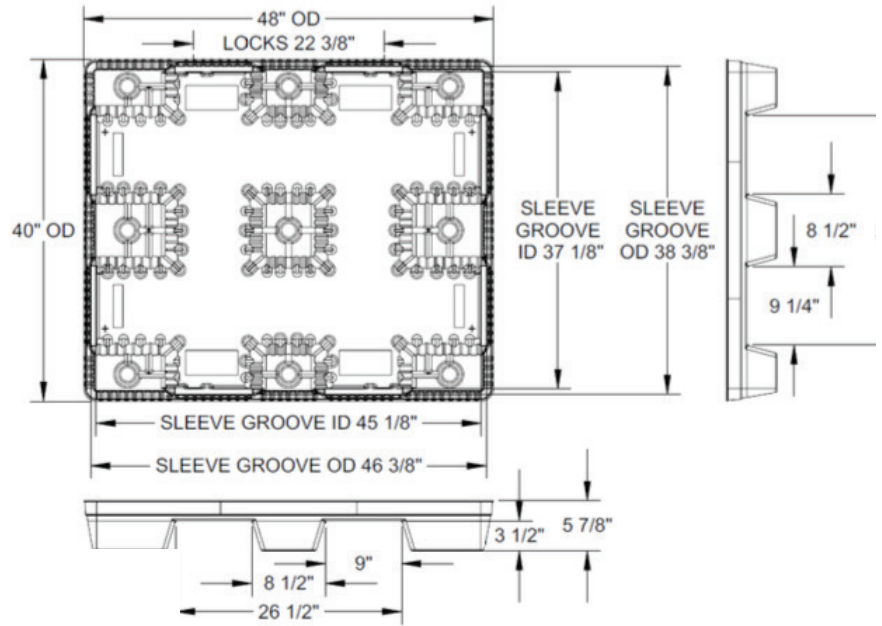
Nestable  
Cover Design

## SPECIFICATIONS

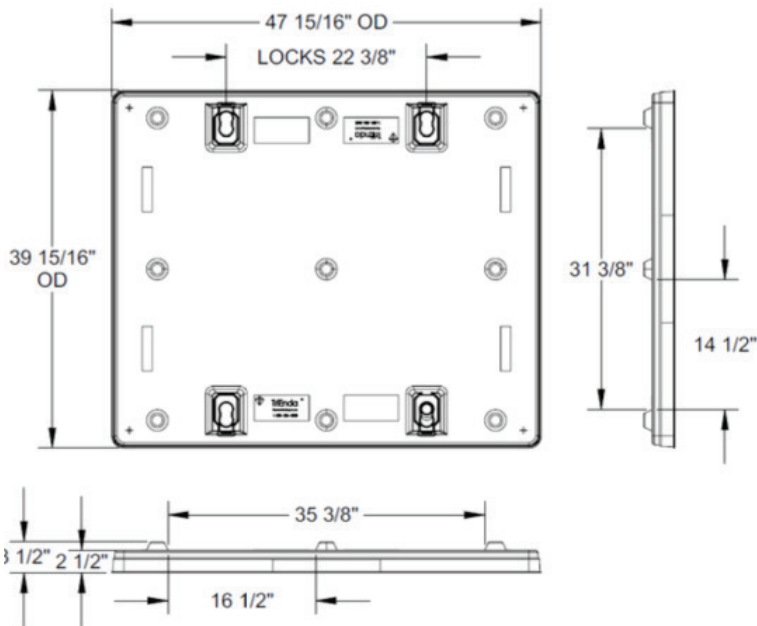
| PRODUCT                            | DIMENSIONS           |                    |                        | WEIGHT AND COLOR           | RATINGS             |                       | STACK HEIGHT        | QTY PER STACK |    | QTY 53' TLD        | QTY 40' SC       | QTY 40' HC       |
|------------------------------------|----------------------|--------------------|------------------------|----------------------------|---------------------|-----------------------|---------------------|---------------|----|--------------------|------------------|------------------|
|                                    | L                    | W                  | H                      |                            | FORK                | FLOOR                 |                     | STD.          | HC |                    |                  |                  |
| BP4048D TP<br>Twin Sheet<br>Pallet | 48"<br>1,219.2<br>mm | 40"<br>1,016<br>mm | 5.875"<br>149.23<br>mm | 20 lbs<br>9.07 kg<br>Black | 1,200 lbs<br>545 kg | 7,500 lbs<br>1,409 kg | 100"<br>2,540<br>mm | 40            | 44 | 1,200/<br>30 Skids | 800/<br>20 Skids | 880/<br>20 Skids |
| BP4048D TC<br>Twin Sheet<br>Cover  | 48"<br>1,219.2<br>mm | 40"<br>1,016<br>mm | 3.5"<br>88.9<br>mm     | 14 lbs<br>6.35 kg<br>Black | -                   | -                     | 100"<br>2,540<br>mm | 40            | 44 | 1,200/<br>30 Skids | 800/<br>20 Skids | 880/<br>20 Skids |

# Big Pak® 4048D TP - TC SPECIFICATIONS

## PALLET



## COVER



## SLEEVE SHIPPING INFORMATION

| QTY PER STACK     | SLEEVE HEIGHT     | SLEEVE I.D.      |
|-------------------|-------------------|------------------|
| 2 High in Trailer | 44.5"<br>1,130 mm | 45.875" x 38.25" |
| 3 High in Trailer | 28.5"<br>724 mm   | 45.875" x 38.25" |
| 4 High in Trailer | 20.25"<br>514 mm  | 45.875" x 38.25" |

## Advantages

Environmentally Friendly  
ISPM 15 Exempt  
Long Service Life



Easy  
Clean



Sanitary



Weather  
Resistant



Impact  
Resistant



4-Way Forklift  
& Forkjack Entry



Recycle

TriEnda publishes standard guidelines for its products, based on its testing standards, and, as such, these guidelines do not constitute any warranty related to each customer's individual application. The material handling industry has not standardized on test methodology and rating criteria for each individual product. All TriEnda products are sold with the understanding that the customer will validate for themselves the suitability of the product for their specific application. As each product application is unique, the customer assumes all risks associated with the determination and actual use of the pallet.



FOR INFORMATION PLEASE CONTACT:  
sales@trienda.com 1-800-356-8150