

CH20000 Series

Commercial Highway

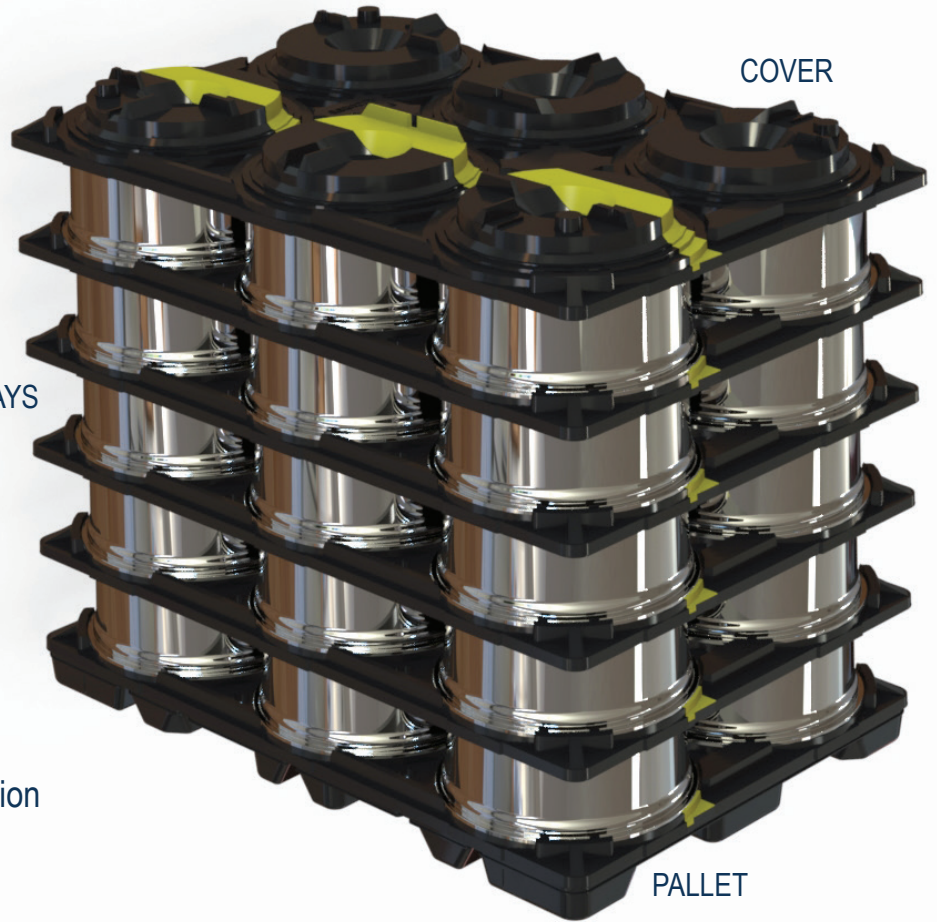
Wheel Packs

16", 16.5", 17.5", 19.5", 20", 22.5"

Manufactured
from HMW-HDPE



Upgrading the Experience™

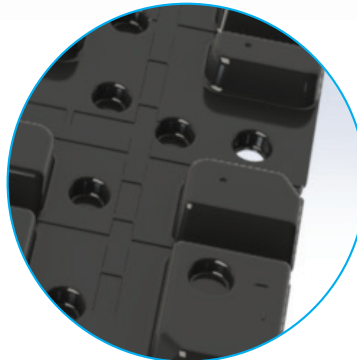


FEATURES

- Positive locking pallet base for safe and secure stacking
- Stackable by design for effective storage and return shipping
- Conveyable
- Secure loads with shrink wrap, or non-metallic banding in specially formed banding slots
- Drain holes alleviate water accumulation

OPTIONS

- Custom stripe identification
- Pallets, trays and caps allow shipping labels to be attached via wire tags
- Custom colors
- Formed-in logos
- Ergonomic hand and robot holes



Drain Holes



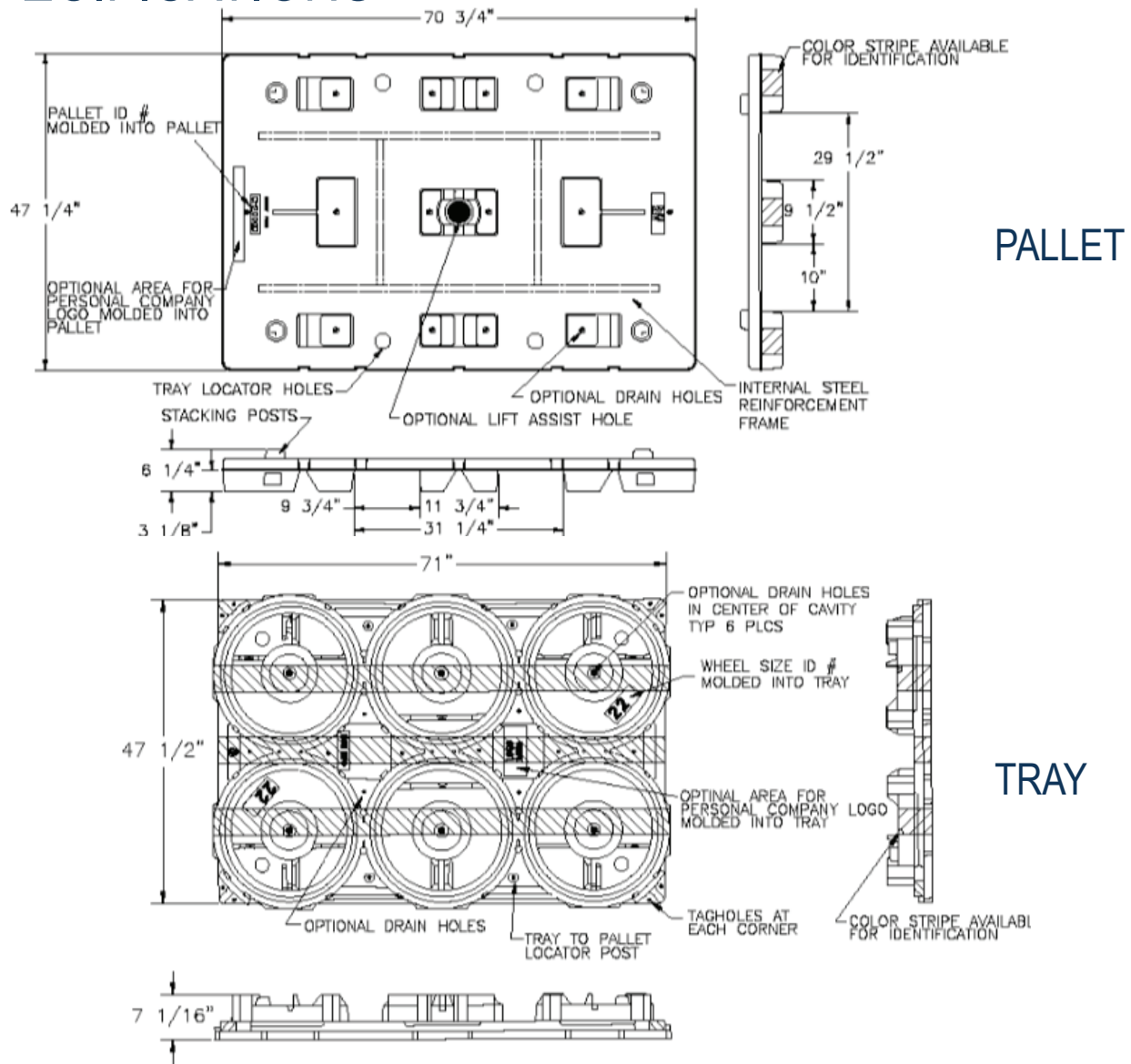
Custom Striping

SPECIFICATIONS

PRODUCT #	DESCRIPTION	DIMENSIONS		COLOR	WHEELS PER LAYER	PER STACK		53' FULL TRUCK LOAD	
		L	W						
CH 20000	Twin Sheet Pallet	70.5"	47.25"	Black	-	20 Pallets		320 Pallets	
CH 16165	16" & 16.5" Wheel Tray & Cover	71"	47.5"	Black	8/Tray	40 Trays		1040 Trays	
CH 17500	17.5" Wheel Tray & Cover	71"	48"	Black	8/Tray	75 Trays	75 Covers	1200 Trays	1200 Covers
CH 19500	19.5" Wheel Tray & Cover	71"	47.75"	Black	6/Tray	75 Trays	75 Covers	1200 Trays	1200 Covers
CH 20225	20" & 22.5" Wheel Tray & Cover	71"	47.75"	Black	6/Tray	75 Trays	75 Covers	1200 Trays	1200 Covers

CH 2000 Series - Commercial Highway Wheel Packs

SPECIFICATIONS



Advantages

Environmentally Friendly
 ISPM 15 Exempt
 Long Service Life



TriEnda publishes standard guidelines for its products, based on its testing standards, and, as such, these guidelines do not constitute any warranty related to each customer's individual application. The material handling industry has not standardized on test methodology and rating criteria for each individual product. All TriEnda products are sold with the understanding that the customer will validate for themselves the suitability of the product for their specific application. As each product application is unique, the customer assumes all risks associated with the determination and actual use of the pallet.



FOR INFORMATION PLEASE CONTACT:
 sales@trienda.com 1-800-356-8150