

# Economy Pallet

40x48 NLT

*\*formerly known as the DC1 Pallet*



*Upgrading the Experience™*

Thermoformed  
HDPE  
Twin Sheet  
Construction



Top view

## FEATURES

- Impact absorbing TriMax™ design for added stiffness and durability
- Impact resistant
- Lightweight for better ergonomics
- Oval leg design minimizes damage caused by fork tines



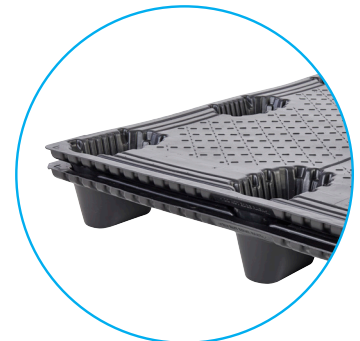
Bottom view

## OPTIONS

- TruGrip™ highest coefficient of friction
- Stripe identification
- Grommets
- Custom logos and/or labels
- RFID
- Coditherm
- Drain holes



Oval Legs

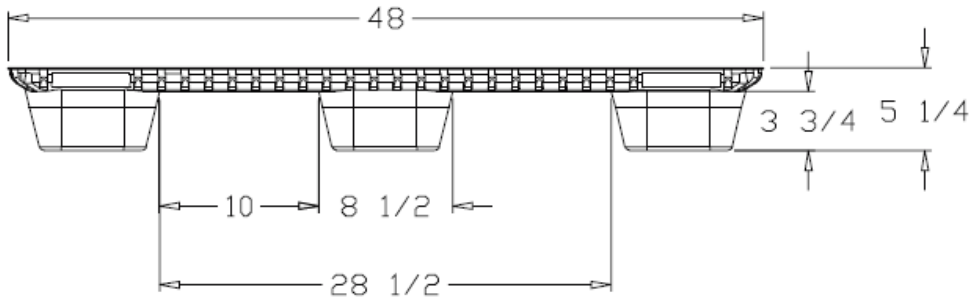
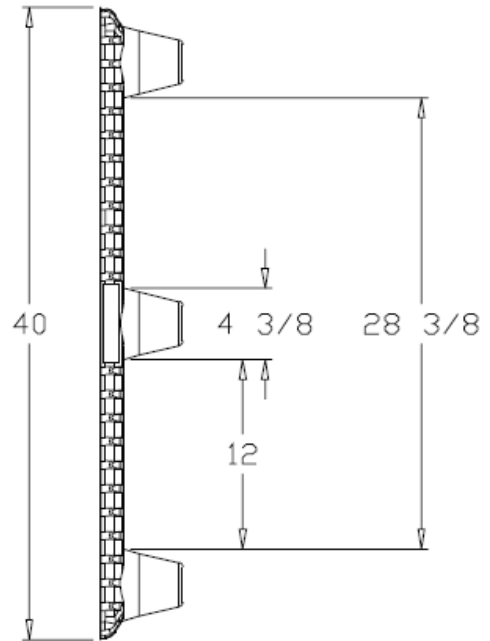
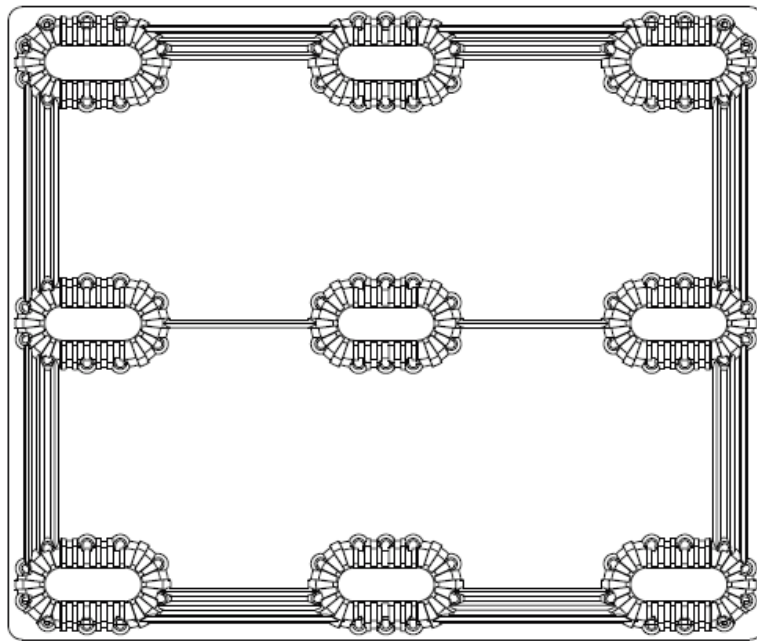


Nestable Pallet Design

## SPECIFICATIONS

PRODUCT	DESCRIPTION	DIMENSIONS			WEIGHT AND COLOR	RATINGS		STACK HEIGHT	QTY PER STACK		QTY 53' TLD	QTY 40' SC	QTY 40' HC
		L	W	H		DYNAMIC (UP TO)	STATIC (UP TO)		STD.	HC			
DC1 4048NLT	Twin Sheet Pallet	48" 1,219 mm	40" 1,016 mm	5.25" 133 mm	13.5 lbs 6 kg Black	2,500 lbs 1,134 kg	10,000 lbs 4,536 kg	108" 2,743 mm	60	62	1,800/ 30 Skids	1,200/ 20 Skids	1,240/ 20 Skids

# DC1 4048NLT SPECIFICATIONS



## Pallet Advantages

Environmentally Friendly  
ISPM 15 Exempt  
Long Service Life



Easy  
Clean



Sanitary



Weather  
Resistant



Impact  
Resistant



4-Way Forklift  
& Forklift  
Entry



Recycle

TriEnda publishes standard guidelines for its products, based on its testing standards, and, as such, these guidelines do not constitute any warranty related to each customer's individual application. The material handling industry has not standardized on test methodology and rating criteria for each individual product. All TriEnda products are sold with the understanding that the customer will validate for themselves the suitability of the product for their specific application. As each product application is unique, the customer assumes all risks associated with the determination and actual use of the pallet.



Pallet  
Buy Back  
Program



*Upgrading the Experience™*