

GS 40x48 Rackable Pallet

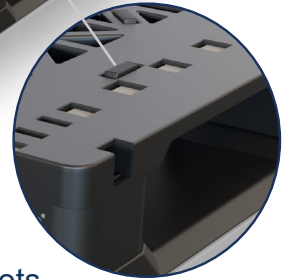
FEATURES

- High-pressure injection molded design using HDPE for optimal performance and durability
- Full picture frame runner system for enhanced versatility and racking capability
- Grommets on top deck and bottom runners to mitigate slippage
- Environmentally friendly and 100% recyclable

OPTIONS

- Different configurations and quantities (0, 1, 3, and 5) of fiberglass rods to accommodate most racking requirements
- Alternative material blends and colors for custom applications
- Custom trimming of runners for use with special material handling equipment
- Ink stamping for company logos and branding

Top View



Grommets



Reinforcement Rods and Ink Stamping



Bottom View

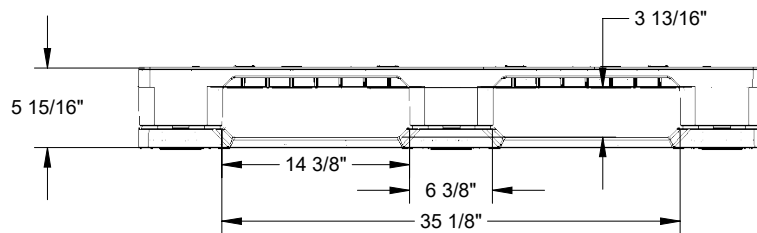
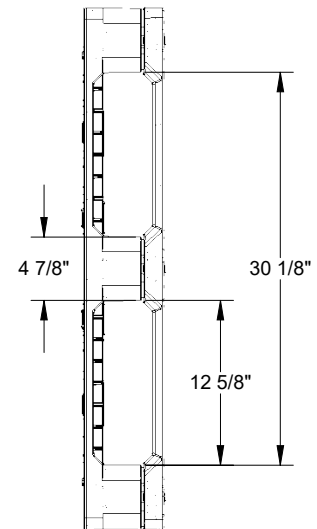
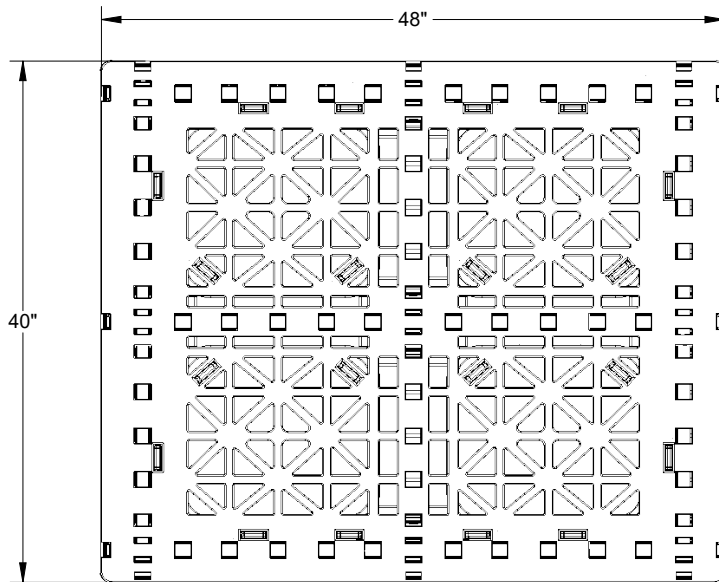
SPECIFICATIONS

PRODUCT	DESCRIPTION	DIMENSIONS			WEIGHT AND COLOR	RATINGS			QTY 53' TLD	QTY 40' SC
		L	W	H		DYNAMIC	STATIC	RACKING		
GS.48.40.6R0	0 rods	48" 1,219.2 mm	40" 1,016 mm	6" 152.4 mm	54 lbs 24.5 kg Black	5,000 lbs 2,268 kg	25,000 lbs 11,340 kg	1,000 lbs 454 kg	540	320
GS.48.40.6R1	1 Rod (40" or 48" direction)	48" 1,219.2 mm	40" 1,016 mm	6" 152.4 mm	56 lbs 25.4 kg Black	5,000 lbs 2,268 kg	25,000 lbs 11,340 kg	1,400 lbs 635 kg	540	320
GS.48.40.6R3	3 Rods (40" or 48" direction)	48" 1,219.2 mm	40" 1,016 mm	6" 152.4 mm	60 lbs 27.2 kg Black	5,000 lbs 2,268 kg	25,000 lbs 11,340 kg	2,800 lbs 1,270 kg	540	320
GS.48.40.6R5	5 Rods (40" and 48" direction)	48" 1,219.2 mm	40" 1,016 mm	6" 152.4 mm	64 lbs 29 kg Black	5,000 lbs 2,268 kg	25,000 lbs 11,340 kg	2,800 lbs 1,270 kg	540	320
GS.48.40.6R5 SHD	5 HD Rods (40" and 48" direction)	48" 1,219.2 mm	40" 1,016 mm	6" 152.4 mm	66 lbs 29.9 kg Black	5,000 lbs 2,268 kg	25,000 lbs 11,340 kg	3,000 lbs 1,361 kg	540	320

Performance characteristics vary with applications. To optimize nominal specifications, loads must be evenly distributed to reach capacity. Load construction, support conditions, transportation, load retention, user facility and temperature are factors that affect pallet capacity.

GS 40x48 Rackable Pallet

SPECIFICATIONS



Pallet Advantages

Environmentally Friendly
 ISPM 15 Exempt
 Long Service Life



Easy
Clean



Sanitary



Weather
Resistant



Impact
Resistant



4-Way Forklift
& Forkjack
Entry



Recycle

TriEnda publishes standard guidelines for its products, based on its testing standards, and, as such, these guidelines do not constitute any warranty related to each customer's individual application. The material handling industry has not standardized on test methodology and rating criteria for each individual product. All TriEnda products are sold with the understanding that the customer will validate for themselves the suitability of the product for their specific application. As each product application is unique, the customer assumes all risks associated with the determination and actual use of the pallet.



Pallet
Buy Back
Program

