

Commercial Pallet

40x48

**formerly known as the DC2 Pallet*

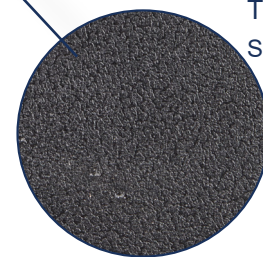


Upgrading the Experience™



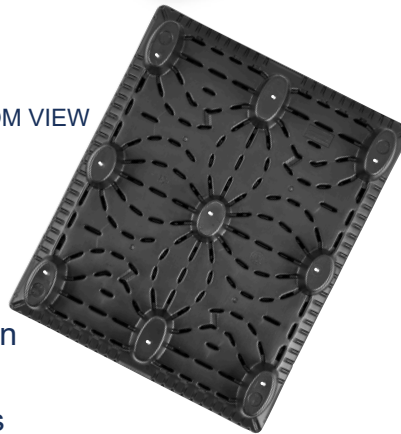
TOP VIEW

Thermoformed
HDPE Twin Sheet
Construction



TruGrip™
SURFACE

BOTTOM VIEW



FEATURES

- Compatible design fits with similar models
- Impact absorbing TriMax™ design for added stiffness and durability
- Lightweight for better ergonomics
- Oval leg design for minimized damage
- Nestable 3:1
- Plastic:Wood

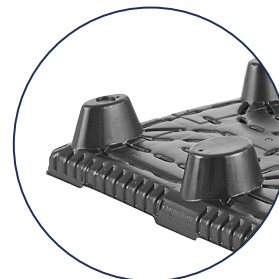
TruGrip™

An anti-skid surface like no other

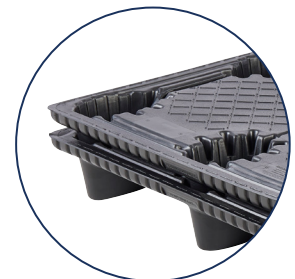
Introducing TruGrip™ offering the highest COF available on the market using a proprietary rubber-like material. Prevents slippage of boxes, on fork tines and on floors.

OPTIONS

- RFID
- TruGrip™ highest coefficient of friction
- Decals
- Drain holes



Oval Legs

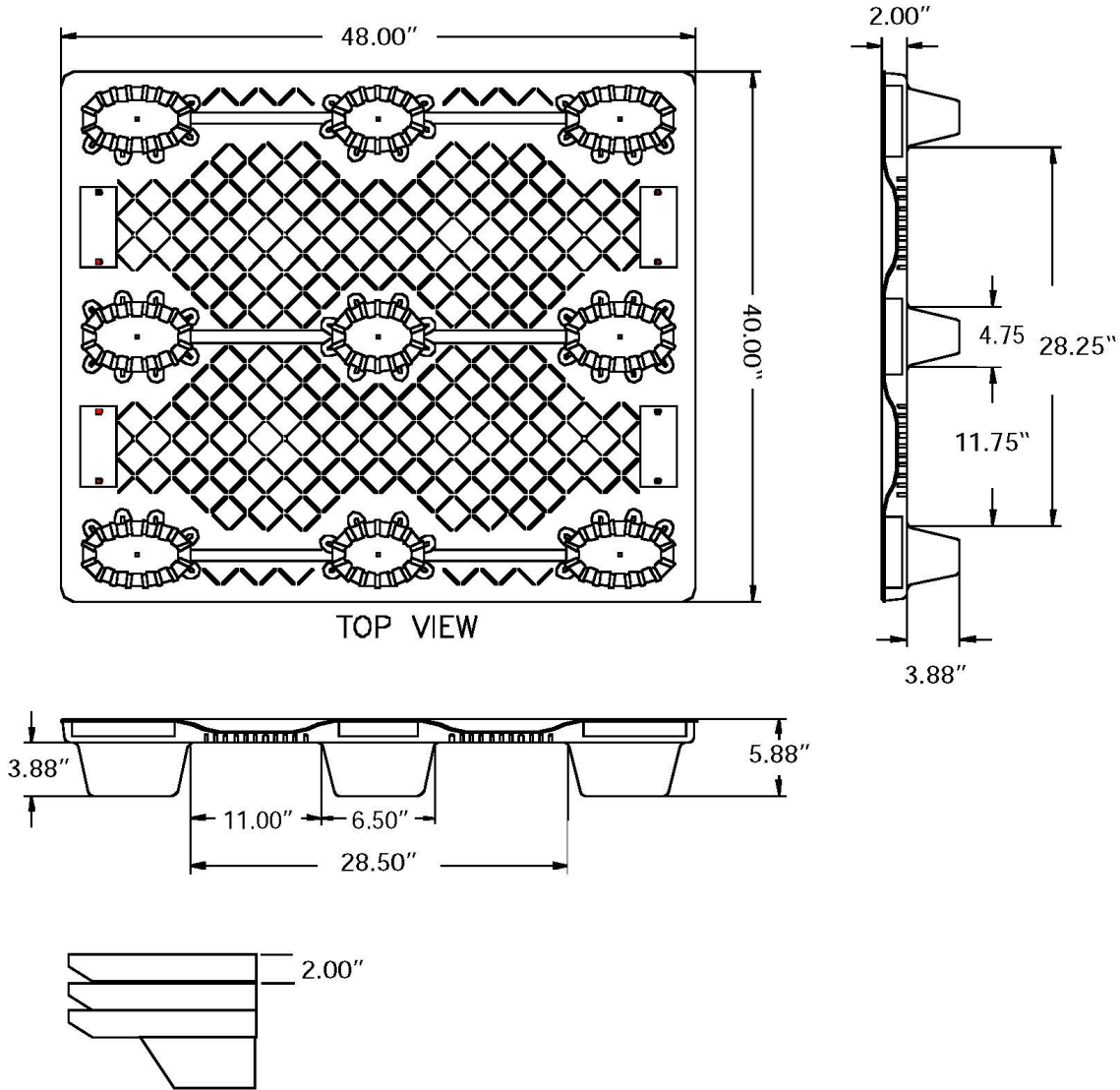


Nestable Design

SPECIFICATIONS

PRODUCT	DESCRIPTION	DIMENSIONS			WEIGHT AND COLOR	RATINGS		QTY PER STACK		QTY 53' TLD	QTY 48' SC
		L	W	H		DYNAMIC	STATIC	PALLETS PER STACK	PALLETS PER STACK SC		
DC2 40x48	Universal Twin Sheet Pallet	48" 1,219 mm	40" 1,016 mm	5.88" 149 mm	20 lbs 9 kg Black	2,500 lbs 1,134 kg	6,500 lbs 2,948 kg	52	52	1,560/ 30 Skids	1,040/ 20 Skids

DC2 COMMERCIAL PALLET SPECIFICATIONS



Pallet Advantages

Environmentally Friendly
 ISPM 15 Exempt
 Long Service Life



TriEnda publishes standard guidelines for its products, based on its testing standards, and, as such, these guidelines do not constitute any warranty related to each customer's individual application. The material handling industry has not standardized on test methodology and rating criteria for each individual product. All TriEnda products are sold with the understanding that the customer will validate for themselves the suitability of the product for their specific application. As each product application is unique, the customer assumes all risks associated with the determination and actual use of the pallet.

