

NEW!



Upgrading the Experience™

GSE40x48 Export Pallet

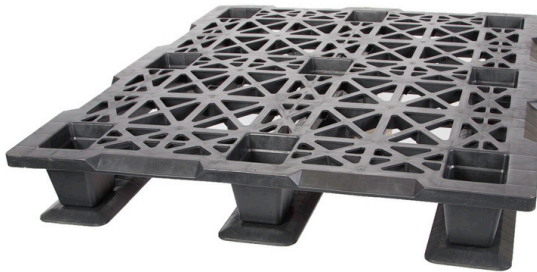
Injection Molded

TOP VIEW NESTABLE PALLET



FEATURES

- Nestable
- Conveyable



TOP VIEW WITH RUNNERS

OPTIONS

- Identification labels
- Coditherm
- Runners (in 48" length only)

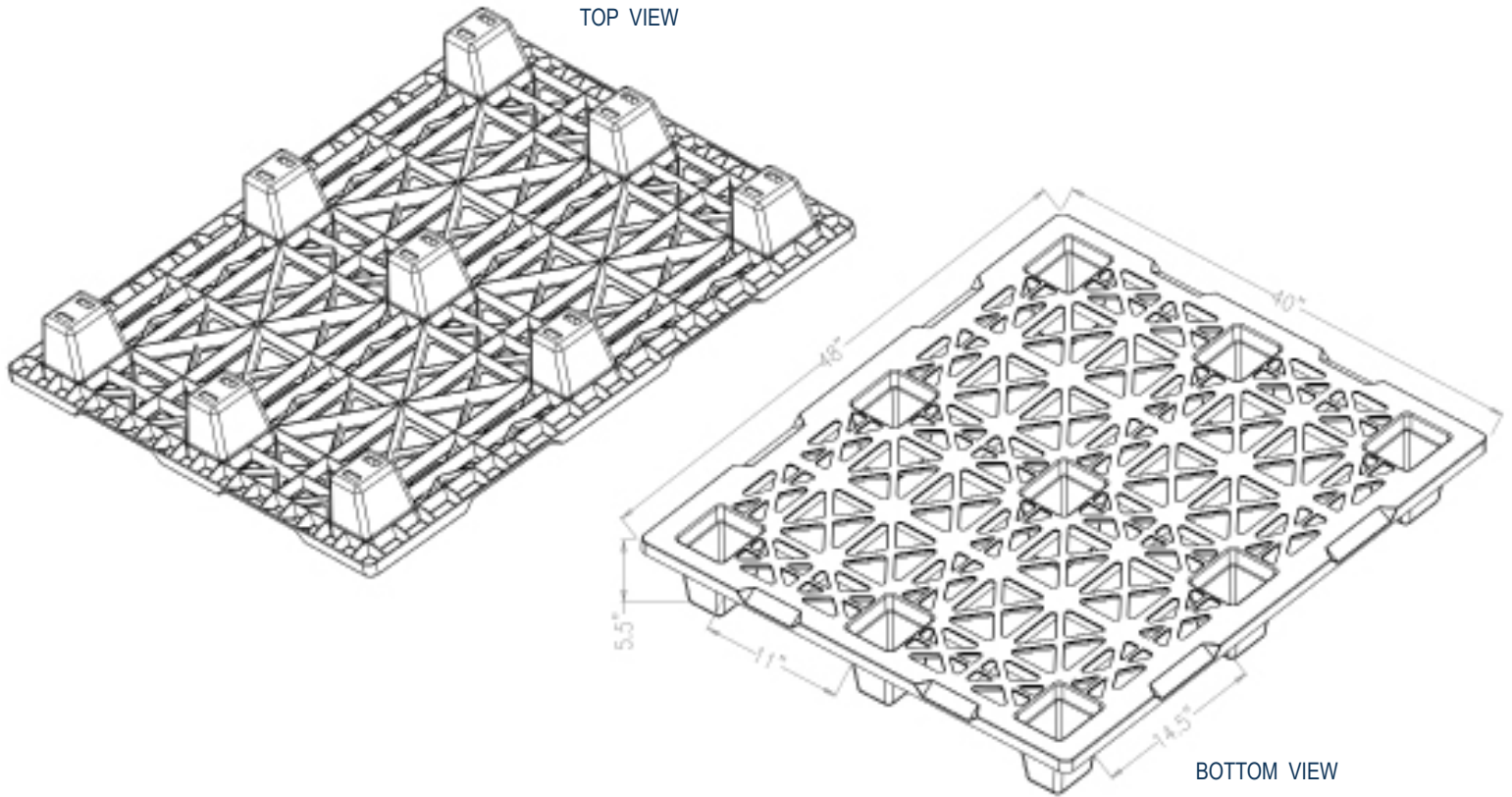
BOTTOM VIEW WITH RUNNERS



SPECIFICATIONS

PRODUCT #	DESCRIPTION	DIMENSIONS			WEIGHT LBS	CAPACITY			COLOR	QTY 53' TLD	QTY 40' SC
		L	W	H		STATIC	DYNAMIC	RACK			
GSE40x48	Injection Molded Nestable Export Pallet	48"	40"	5.5"	17 lbs.	5,000 lbs.	2,000 lbs.	N/A	Black	2,100	1,280
SA 40x48 NST 3 Runner	Injection Molded Nestable Export Pallet with Runners	48"	40"	5.5"	24 lbs	5,000 lbs	2,000 lbs	N/A	Black	510	320

GSE40x48 PALLET SPECIFICATIONS



Pallet Advantages

Environmentally Friendly
ISPM 15 Exempt
Long Service Life



TriEnda publishes standard guidelines for its products, based on its testing standards, and, as such, these guidelines do not constitute any warranty related to each customer's individual application. The material handling industry has not standardized on test methodology and rating criteria for each individual product. All TriEnda products are sold with the understanding that the customer will validate for themselves the suitability of the product for their specific application. As each product application is unique, the customer assumes all risks associated with the determination and actual use of the pallet.



FOR INFORMATION PLEASE CONTACT:
sales@trienda.com 1.800.356-8150