

# BigPak® 44x48B SP

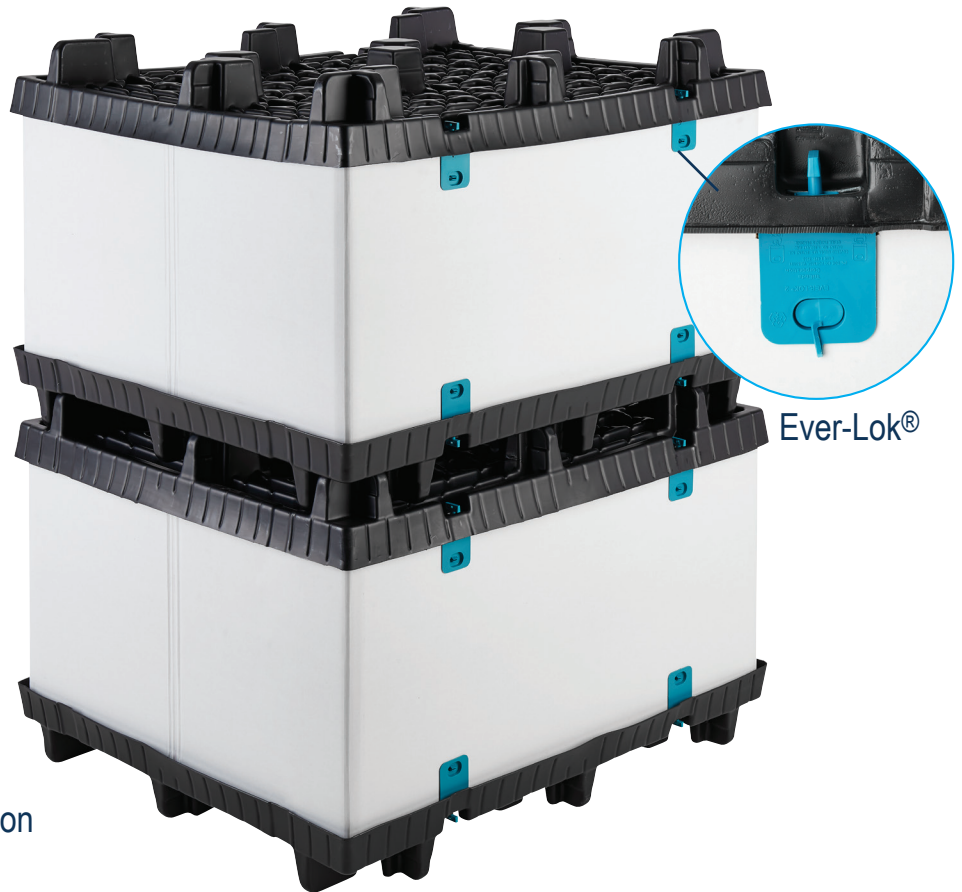
Thermoformed  
HDPE Single Sheet  
Construction

## FEATURES

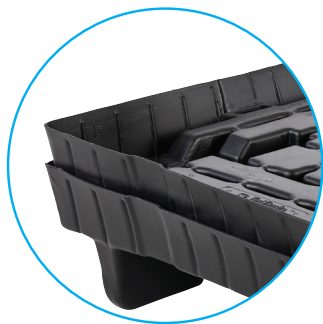
- Pallet and lid are interchangeable
- Minimizes storage space, reduces shipping costs
- Lightweight for better ergonomics

## OPTIONS

- Ever-Lok® provides unit security and eliminates stretch wrapping
- Collapsible sleeves
- Wide range of stripe colors
- One or multiple stripes in 48" direction
- Leg drain holes
- Custom logos



Ever-Lok®



Nestable Pallet



Interlocking Pallet Legs

### COLLAPSABLE SLEEVE OPTIONS



Fiberboard  
Z-fold



Twin-Sheet  
Thermoformed



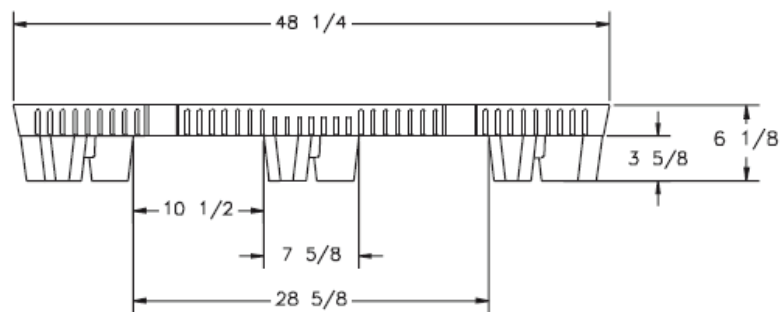
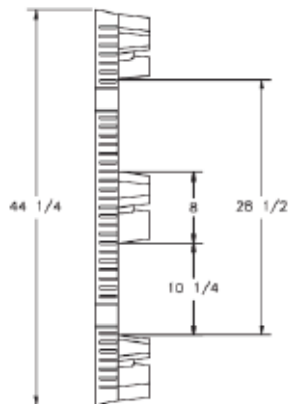
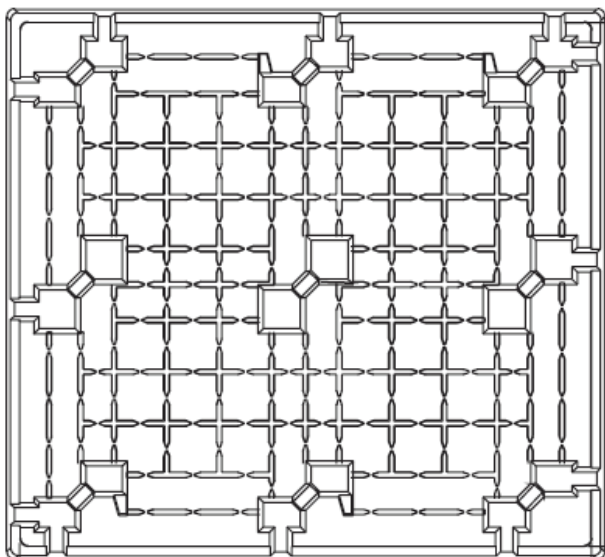
Plastic

## SPECIFICATIONS

| PRODUCT                        | DIMENSIONS            |                       |                     | WEIGHT AND COLOR           | RATINGS           |                       | STACK HEIGHT     | QTY PER STACK |    | QTY 53' TLD        | QTY 40' SC       | QTY 40' HC       |
|--------------------------------|-----------------------|-----------------------|---------------------|----------------------------|-------------------|-----------------------|------------------|---------------|----|--------------------|------------------|------------------|
|                                | L                     | W                     | H                   |                            | FORK              | FLOOR                 |                  | STD.          | HC |                    |                  |                  |
| BP4448B SP Single Sheet Pallet | 48.25"<br>1,225.55 mm | 44.25"<br>1,123.95 mm | 6.125"<br>155.58 mm | 22 lbs<br>9.98 kg<br>Black | 800 lbs<br>364 kg | 4,000 lbs<br>1,818 kg | 100"<br>2,540 mm | 50            | 54 | 1,400/<br>28 Skids | 900/<br>18 Skids | 972/<br>18 Skids |

# Big Pak® 44x48B SP

## SPECIFICATIONS



### SLEEVE SHIPPING INFORMATION

| QTY PER STACK     | SLEEVE HEIGHT   | SLEEVE I.D.      |
|-------------------|-----------------|------------------|
| 2 High in Trailer | 44"<br>1,118 mm | 46.25" x 42.125" |
| 3 High in Trailer | 28"<br>711 mm   | 46.25" x 42.125" |
| 4 High in Trailer | 20"<br>508 mm   | 46.25" x 42.125" |

## Advantages

Environmentally Friendly  
ISPM 15 Exempt  
Long Service Life



Easy  
Clean



Sanitary



Weather  
Resistant



Impact  
Resistant



4-Way Forklift  
& Forklift Entry



Recycle

TriEnda publishes standard guidelines for its products, based on its testing standards, and, as such, these guidelines do not constitute any warranty related to each customer's individual application. The material handling industry has not standardized on test methodology and rating criteria for each individual product. All TriEnda products are sold with the understanding that the customer will validate for themselves the suitability of the product for their specific application. As each product application is unique, the customer assumes all risks associated with the determination and actual use of the pallet.



Pallet  
Buy Back  
Program



*Upgrading the Experience™*

FOR INFORMATION PLEASE CONTACT:  
sales@trienda.com 1-800-356-8150