

# BigPak<sup>®</sup> 800x1200

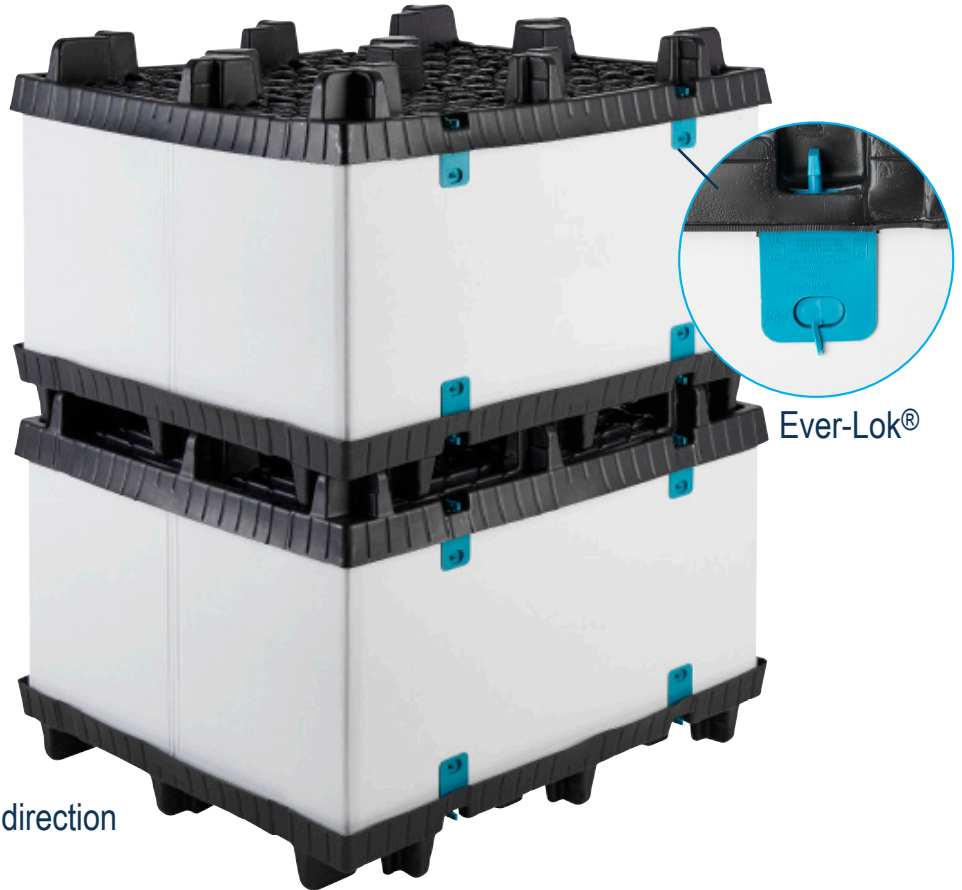
Thermoformed  
HDPE Single Sheet  
Construction

## FEATURES

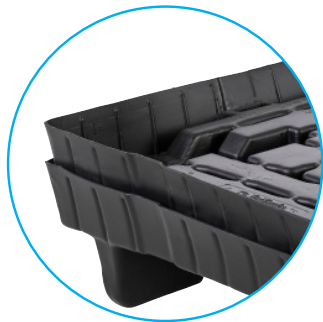
- Pallet and lid are interchangeable
- Minimizes storage space, reduces shipping costs
- Lightweight for better ergonomics

## OPTIONS

- Ever-Lok<sup>®</sup> provides unit security and eliminates stretch wrapping
- Collapsible sleeves
- Wide range of stripe colors
- One or multiple stripes in 1200mm direction
- Leg drain holes
- Custom logos



Ever-Lok<sup>®</sup>



Nestable Pallet



Interlocking Pallet Legs

### COLLAPSABLE SLEEVE OPTIONS



Fiberboard  
Z-fold



Twin-Sheet  
Thermoformed



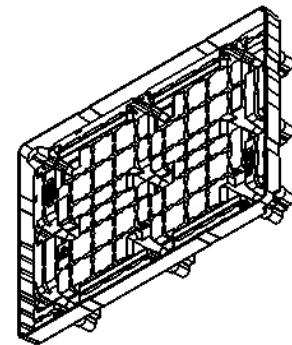
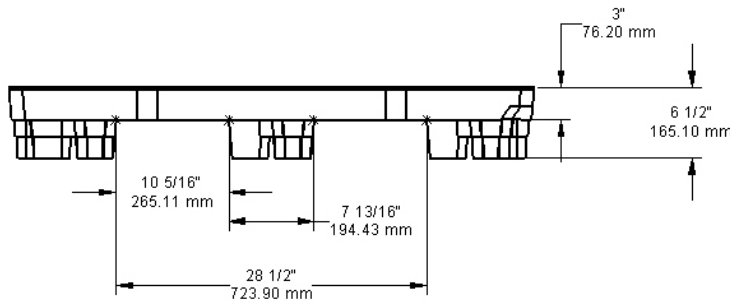
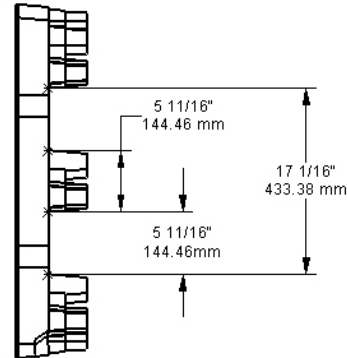
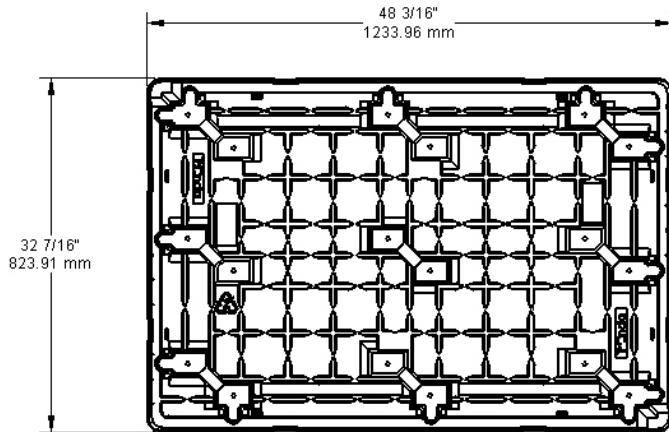
Plastic

## SPECIFICATIONS

PRODUCT	DIMENSIONS			WEIGHT AND COLOR	RATINGS		STACK HEIGHT	QTY PER STACK		QTY 53' TLD	QTY 40' SC
	L	W	H		DYNAMIC (UP TO)	STATIC (UP TO)		STD.	HC		
BP8001200 Single Sheet Pallet	1200 mm 47.24"	800 mm 31.5"	165 mm 6.5"	13.5 lbs 6.12 kg Black	800 lbs 363 kg	4,000 lbs 1,814 kg	100" 2,540 mm	50	54	2,250/ 45 Skids	1,500/ 30 Skids

# Big Pak® 800x1200

## SPECIFICATIONS



### SLEEVE SHIPPING INFORMATION

QTY PER STACK	SLEEVE HEIGHT	SLEEVE I.D.
2 High in Trailer	44.5" 1,130 mm	45.875" x 38.25"
3 High in Trailer	28.5" 724 mm	45.875" x 38.25"
4 High in Trailer	20.25" 514 mm	45.875" x 38.25"

## Advantages

Environmentally Friendly  
ISPM 15 Exempt  
Long Service Life



Easy  
Clean



Sanitary



Weather  
Resistant



Impact  
Resistant



4-Way Forklift  
& Forkjack Entry



Recycle

TriEnda publishes standard guidelines for its products, based on its testing standards, and, as such, these guidelines do not constitute any warranty related to each customer's individual application. The material handling industry has not standardized on test methodology and rating criteria for each individual product. All TriEnda products are sold with the understanding that the customer will validate for themselves the suitability of the product for their specific application. As each product application is unique, the customer assumes all risks associated with the determination and actual use of the pallet.



Pallet  
Buy Back  
Program



Upgrading the Experience™

FOR INFORMATION PLEASE CONTACT:  
sales@trienda.com 1-800-356-8150