

GS 48x48 Rackable Pallet

FEATURES

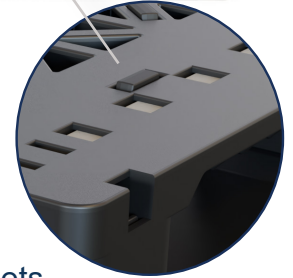
- High-pressure injection molded design using HDPE for optimal performance and durability
- Full picture frame runner system for enhanced versatility and racking capability
- Grommets on top and bottom decks to mitigate slippage
- Environmentally friendly and 100% recyclable

Top View



OPTIONS

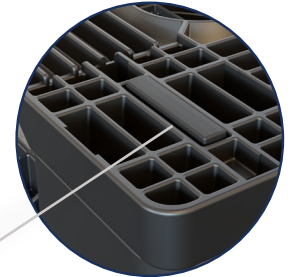
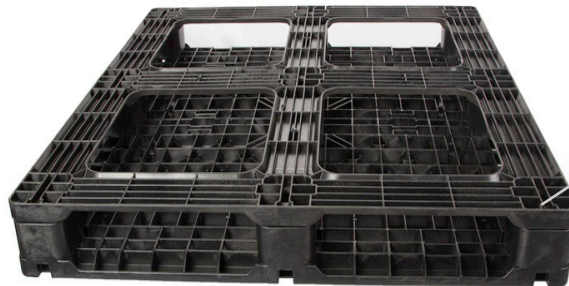
- Different configurations and quantities (0, 1, 3, and 5) of fiberglass rods to accommodate most racking requirements
- Alternative material blends and colors for custom applications
- Custom trimming of runners for use with special material handling equipment
- Ink stamping for company logos and branding



Grommets



Reinforcement Rods and Ink Stamping



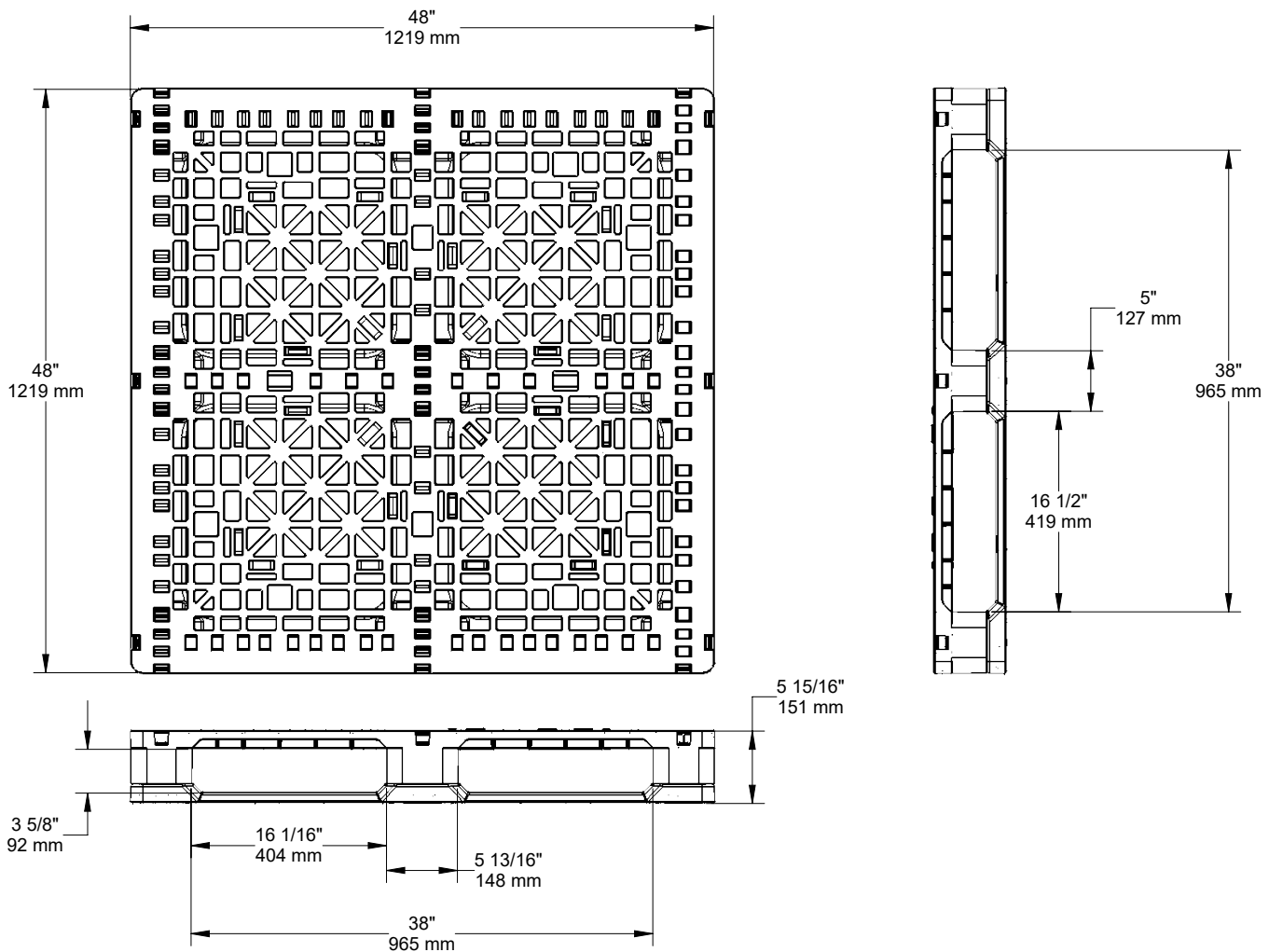
Bottom View

SPECIFICATIONS

PRODUCT	DESCRIPTION	DIMENSIONS			WEIGHT AND COLOR	RATINGS			QTY 53' TLD	QTY 40' SC
		L	W	H		DYNAMIC	STATIC	RACKING		
GS.48.48.6R0	0 rods	48" 1,219.2 mm	48" 1,219.2 mm	6" 152.4 mm	46 lbs 20.9 kg Black	5,000 lbs 2,268 kg	20,000 lbs 9,072 kg	500 lbs 226.8 kg	442	300
GS.48.48.6R1	1 Rod	48" 1,219.2 mm	48" 1,219.2 mm	6" 152.4 mm	48 lbs 21.8 kg Black	5,000 lbs 2,268 kg	20,000 lbs 9,072 kg	750 lbs 340.2 kg	442	300
GS.48.48.6R3	3 Rods	48" 1,219.2 mm	48" 1,219.2 mm	6" 152.4 mm	50 lbs 22.7 kg Black	5,000 lbs 2,268 kg	20,000 lbs 9,072 kg	1,600 lbs 725.7 kg	442	300
GS.48.48.6R5	5 Rods	48" 1,219.2 mm	48" 1,219.2 mm	6" 152.4 mm	52 lbs 23.6 kg Black	5,000 lbs 2,268 kg	20,000 lbs 9,072 kg	1,600 lbs 725.7 kg	442	300

Performance characteristics vary with applications. To optimize nominal specifications, loads must be evenly distributed to reach capacity. Load construction, support conditions, transportation, load retention, user facility and temperature are factors that affect pallet capacity.

GS 48x48 Rackable Pallet SPECIFICATIONS



Pallet Advantages

Environmentally Friendly
ISPM 15 Exempt
Long Service Life



Easy
Clean



Sanitary



Weather
Resistant



Impact
Resistant



4-Way Forklift
& Forkjack
Entry



Recycle

TriEnda publishes standard guidelines for its products, based on its testing standards, and, as such, these guidelines do not constitute any warranty related to each customer's individual application. The material handling industry has not standardized on test methodology and rating criteria for each individual product. All TriEnda products are sold with the understanding that the customer will validate for themselves the suitability of the product for their specific application. As each product application is unique, the customer assumes all risks associated with the determination and actual use of the pallet.

