

# DELIVERY CART

## Thermoformed HDPE Twin Sheet Construction



TruGrip<sup>™</sup>  
SURFACE

## FEATURES

- Perimeter lip for product security
- Comfort-height handle
- Impact-resistant
- Sanitary and easy to clean
- Lightweight for better ergonomics
- Ergonomic Handholes
- Premium locking wheels for easy maneuvering
- 30" deck fits narrow spaces and delivery doors

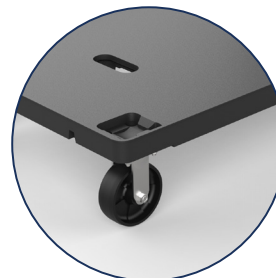
## OPTIONS

- TruGrip<sup>™</sup> highest coefficient of friction
- FDA materials available with virgin resin
- Drain holes

## TruGrip<sup>™</sup>

An anti-skid surface like no other

Introducing TruGrip<sup>™</sup> offering the highest COF available on the market using a proprietary rubber-like material. Prevents slippage of boxes, on fork tines and on floors.



Premium locking  
wheels

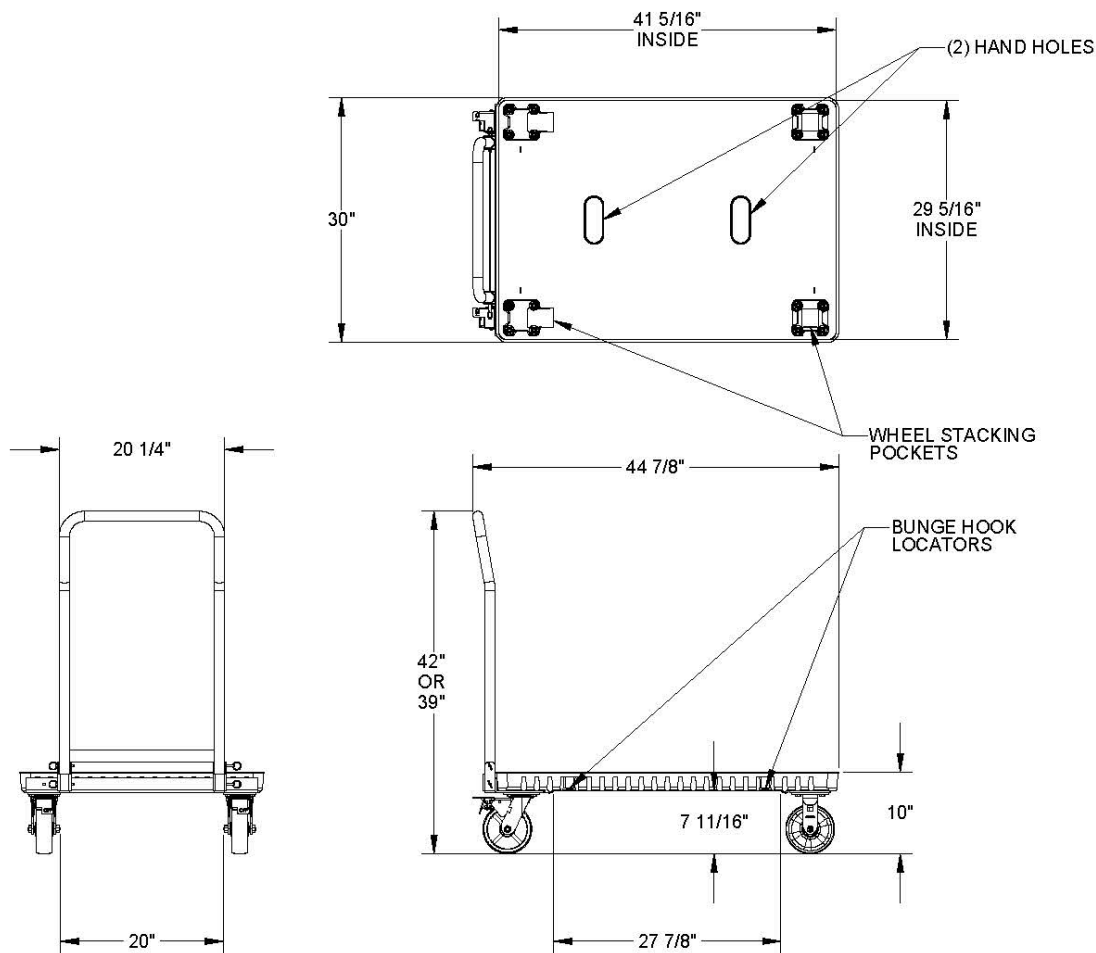


Ergonomic Hand Holes

## SPECIFICATIONS

PRODUCT	DIMENSIONS			WEIGHT AND COLOR	DYNAMIC RATING	STACK HEIGHT	QUANTITY					
	L	W	H				53' TLD		40' SC		40' HC	
Delivery Cart	42"	30"	10"	68 lbs	2,000 lbs	105"	PER STACK	TOTAL	PER STACK	TOTAL	PER STACK	TOTAL
	1,066.8 mm	762 mm	254 mm	30.84 kg			Black	907 kg	2,667 mm	12	528	15

# DELIVERY CART SPECIFICATIONS



C:\Trienda Holdings\Project\_Files\06150-0000189 - SMALL FORMAT DELIVERY CART\CadFiles\06189 Marketing Drawing

Printed - Thursday, October 29, 2020

## Pallet Advantages

Environmentally Friendly  
ISPM 15 Exempt  
Long Service Life



Easy  
Clean



Sanitary



Weather  
Resistant



Impact  
Resistant



4-Way Forklift  
& Forklift  
Entry



Recycle

TriEnda publishes standard guidelines for its products, based on its testing standards, and, as such, these guidelines do not constitute any warranty related to each customer's individual application. The material handling industry has not standardized on test methodology and rating criteria for each individual product. All TriEnda products are sold with the understanding that the customer will validate for themselves the suitability of the product for their specific application. As each product application is unique, the customer assumes all risks associated with the determination and actual use of the pallet.



Pallet  
Buy Back  
Program



[www.trienda.com](http://www.trienda.com) | [sales@trienda.com](mailto:sales@trienda.com) | 1-800-356-8150