

SEPARATORS

All purpose buffer between anything that might damage freight

01 / Details

Cargo Protect+ delivers better freight protection at a lower total cost.

- Provides strong, secure buffer between all types of pallet loads and packaging
- Works as buffers between Cargo Protect+ Bulkhead Spacers and pallet loads
- Provides protection around air bags
- Stabilizes loads with varied stack heights



**[CARGO
PROTECT+]**

**REDUCES DAMAGES
BY UP TO 80%**

**INCREASES PRODUCT
QUANTITY PER SHIPMENT**



Ergonomic hand holes



Prevents toppling of freight



Can be combined with strapping

02 / Specifications

Separator Pad

- 32"w x 75"h x 2.00"d - 17 lbs
- Can fit 1,235 in return shipments
- Parts are nestable for return shipments

Separator Sheet

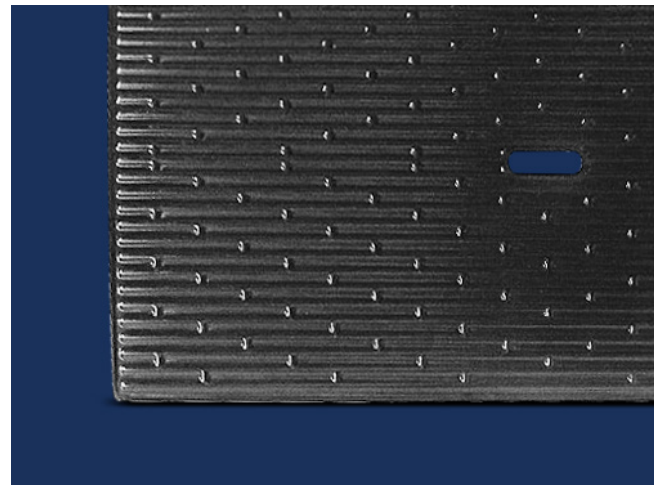
- 44"w x 84"h x 0.50"d - 21 lbs
- Can fit 2,100 in return shipments
- Parts are nestable for return shipments

SEPARATORS

FEATURES



- Energy absorbing—cushions without crushing
- Lightweight rigid parts enable fast loading
- Ergonomic hand holes ensure easy handling
- Splinter-free and lightweight HDPE material reduces dock related injuries
- Weather and moisture resistance allows outside storage to optimize warehouse space
- Easy to clean surfaces are beneficial for use with a variety of commodities



CARGO PROTECT+ ADVANTAGES

- Environmentally Friendly
- ISPM 15 Exempt
- Long Service Life



Easy
Clean



Sanitary



Weather
Resistant



Impact
Resistant



Recycle

TriEnda publishes standard guidelines for its products, based on its testing standards, and, as such, these guidelines do not constitute any warranty related to each customer's individual application. The material handling industry has not standardized on test methodology and rating criteria for each individual product. All TriEnda products are sold with the understanding that the customer will validate for themselves the suitability of the product for their specific application. As each product application is unique, the customer assumes all risks associated with the determination and actual use of the pallet.

