

GSE Export Pallet

40x48

Injection Molded

01 / Details

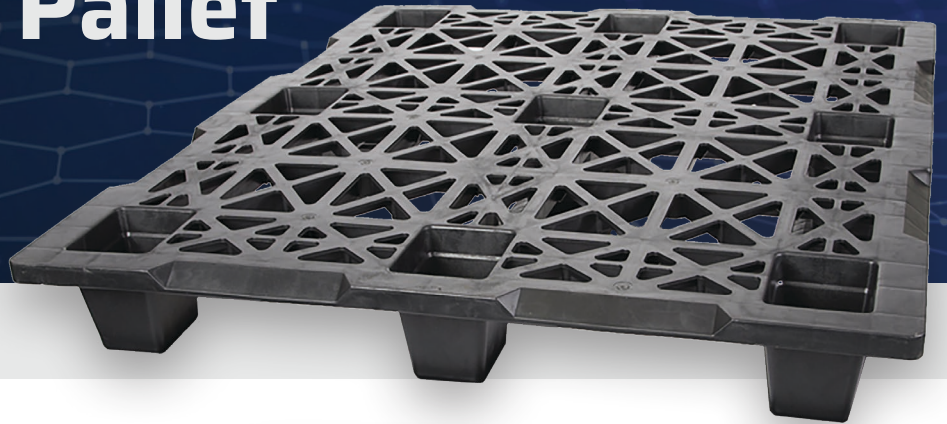
FEATURES

- Nestable
- Conveyable

OPTIONS

- Identification labels
- Coditherm Runners
(in 48" length only)

Top view



Top view with runners



Bottom view with runners



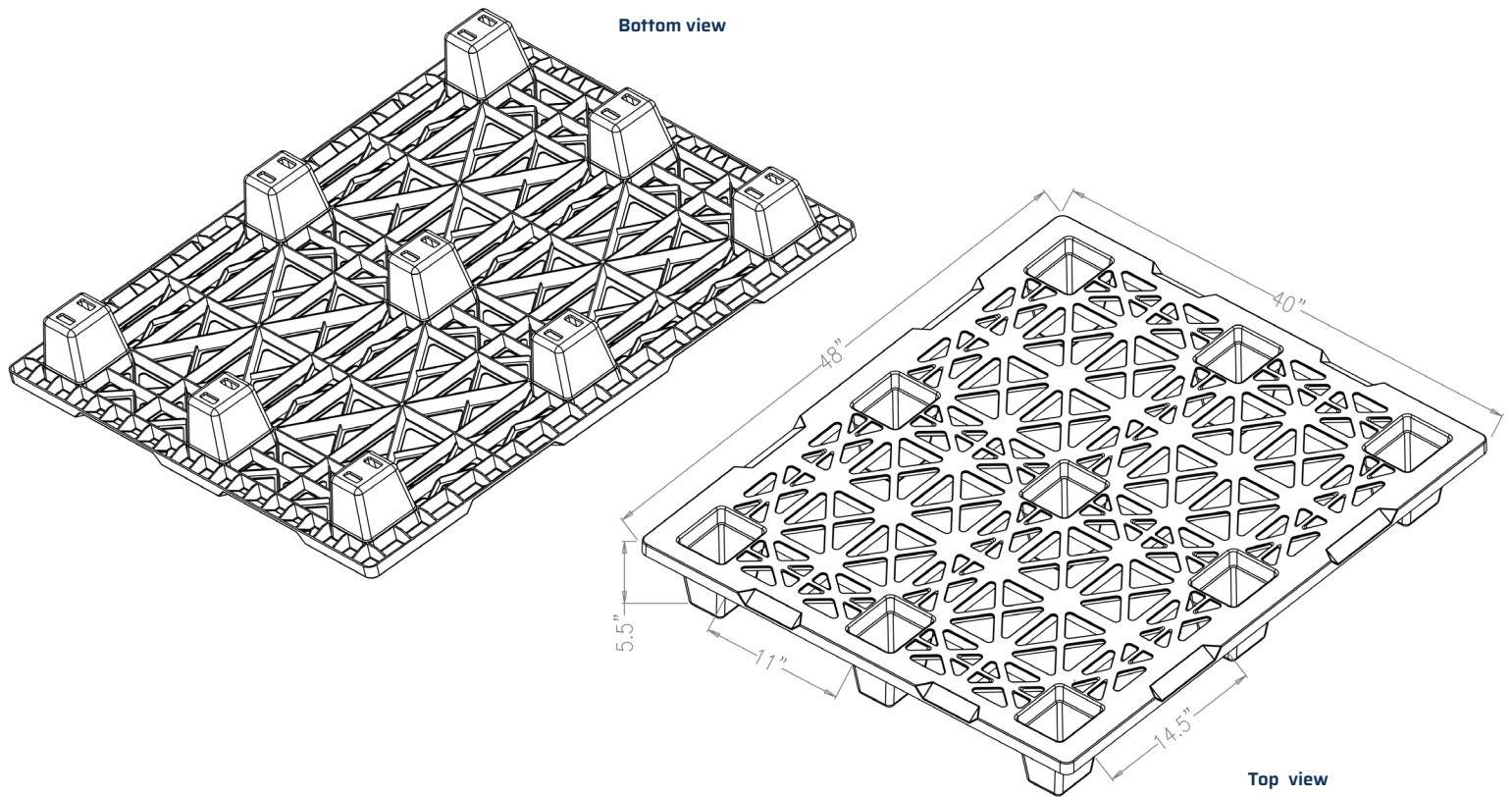
02 / Specifications

PRODUCT	DESCRIPTION	DIMENSIONS			WEIGHT	CAPACITY			COLOR	QTY 53' TLD	QTY 40' SC
		L	W	H		STATIC	DYNAMIC	RACK			
GSE 40x48	Injection Molded Nestable Export Pallet	48" 1,219 mm	40" 1,016 mm	5.5" 138 mm	17 lbs 7.7 kg	5,000 lbs	2,000 lbs	N/A	Black	2,100	1,280
SA 40x48 NST 3 Runner	Injection Molded Nestable Export Pallet with Runners	48" 1,219 mm	40" 1,016 mm	5.5" 138 mm	24 lbs 10.9 kg	5,000 lbs	2,000 lbs	N/A	Black	510	320

Performance characteristics vary with applications. To optimize nominal specifications, loads must be evenly distributed to reach capacity. Load construction, support conditions, transportation, load retention, user facility and temperature are factors that affect pallet capacity.

GSE Export Pallet 40x48

SPECIFICATIONS



PALLET ADVANTAGES

- Environmentally Friendly
- ISPM 15 Exempt
- Long Service Life



Easy
Clean



Sanitary



Impact
Resistant



4-Way
Forklift/jack
Entry



Recycle

TriEnda publishes standard guidelines for its products, based on its testing standards, and, as such, these guidelines do not constitute any warranty related to each customer's individual application. The material handling industry has not standardized on test methodology and rating criteria for each individual product. All TriEnda products are sold with the understanding that the customer will validate for themselves the suitability of the product for their specific application. As each product application is unique, the customer assumes all risks associated with the determination and actual use of the pallet.

