

PC10000 Series

Passenger Car Wheel Packs

13"-20", 22"

Manufactured from HMW-HDPE



COVER

TRAYS

PALLET

01 / Details

FEATURES

- Conveyable
- Drain holes alleviate water accumulation
- Positive locking pallet base for safe and secure stacking
- Stackable by design for effective storage and return shipping
- Secure loads with shrink wrap or non-metallic bands in specially formed banding slots

OPTIONS

- Pallets, trays and caps allow shipping labels to be attached via wire tags
- Ergonomic hand and robot holes
- Custom stripe identification
- Custom colors
- Formed-in logos



Drain Holes



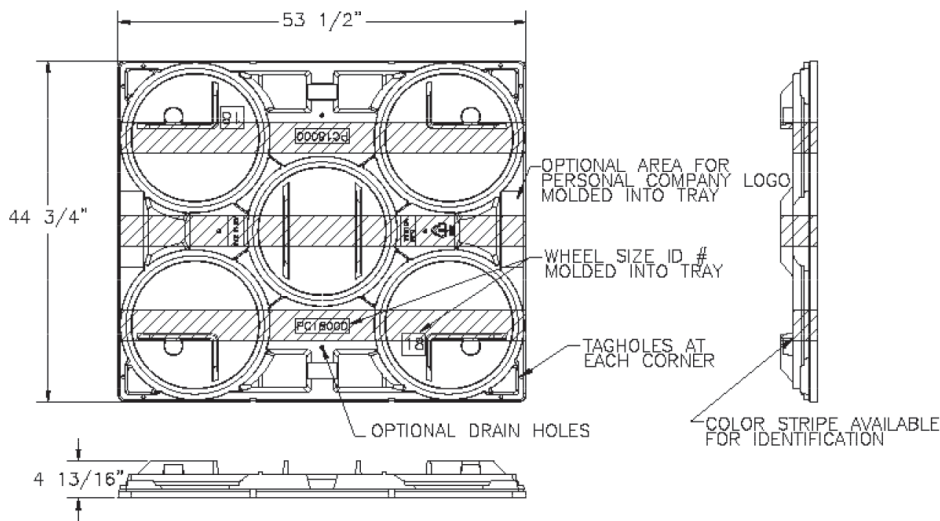
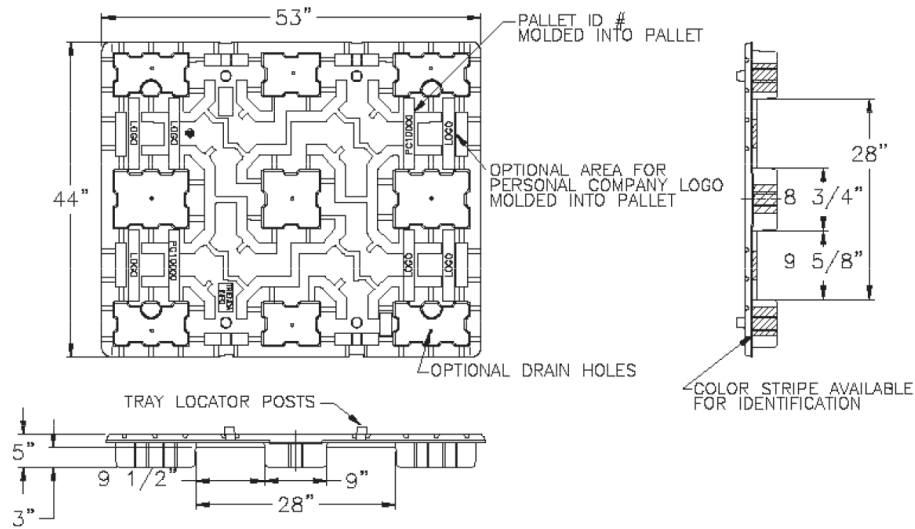
Custom Striping

02 / Specifications

| PRODUCT # | DESCRIPTION | DIMENSIONS | | COLOR | WHEELS PER LAYER | PER STACK | | 53' FULL TRUCK LOAD | |
|-----------|------------------------|------------|--------|-------|------------------|------------|-----------|---------------------|-------------|
| | | L | W | | | | | | |
| PC10000 | Twin Sheet Pallet | 53" | 44" | Black | - | 36 Pallets | | 792 Pallets | |
| PC13000 | 13" Wheel Tray & Cover | 53.5" | 44.75" | Black | 9/Tray | 80 Trays | 60 Covers | 1760 Trays | 1320 Covers |
| PC14000 | 14" Wheel Tray & Cover | 53.5" | 44.75" | Black | 8/Tray | 80 Trays | 60 Covers | 1760 Trays | 1320 Covers |
| PC15000 | 15" Wheel Tray & Cover | 53.5" | 44.75" | Black | 8/Tray | 80 Trays | 60 Covers | 1760 Trays | 1320 Covers |
| PC16000 | 16" Wheel Tray & Cover | 53.5" | 44.75" | Black | 6/Tray | 80 Trays | 60 Covers | 1760 Trays | 1320 Covers |
| PC17000 | 17" Wheel Tray & Cover | 53.5" | 44.75" | Black | 5/Tray | 80 Trays | 60 Covers | 1760 Trays | 1320 Covers |
| PC18000 | 18" Wheel Tray & Cover | 53.5" | 44.75" | Black | 5/Tray | 80 Trays | 60 Covers | 1760 Trays | 1320 Covers |
| PC19000 | 19" Wheel Tray & Cover | 53.5" | 44.75" | Black | 4/Tray | 80 Trays | 60 Covers | 1760 Trays | 1320 Covers |
| PC20000 | 20" Wheel Tray & Cover | 53.5" | 44.75" | Black | 4/Tray | 80 Trays | 60 Covers | 1760 Trays | 1320 Covers |
| PC22000 | 22" Wheel Tray & Cover | 53.5" | 48.75" | Black | 4/Tray | 80 Trays | 60 Covers | 1760 Trays | 1320 Covers |

Performance characteristics vary with applications. To optimize nominal specifications, loads must be evenly distributed to reach capacity. Load construction, support conditions, transportation, load retention, user facility and temperature are factors that affect pallet capacity.

CH10000 - Passenger Car Wheel Packs 13" - 20", 22" SPECIFICATIONS



PALLET ADVANTAGES

- Environmentally Friendly
- ISPM 15 Exempt
- Long Service Life



Easy Clean



Sanitary



Impact Resistant



4-Way Forklift/jack Entry



Recycle

TriEnda publishes standard guidelines for its products, based on its testing standards, and, as such, these guidelines do not constitute any warranty related to each customer's individual application. The material handling industry has not standardized on test methodology and rating criteria for each individual product. All TriEnda products are sold with the understanding that the customer will validate for themselves the suitability of the product for their specific application. As each product application is unique, the customer assumes all risks associated with the determination and actual use of the pallet.

