

## T44.25x48 Pallet

### Light Duty

Thermoformed HDPE  
Twin Sheet Construction

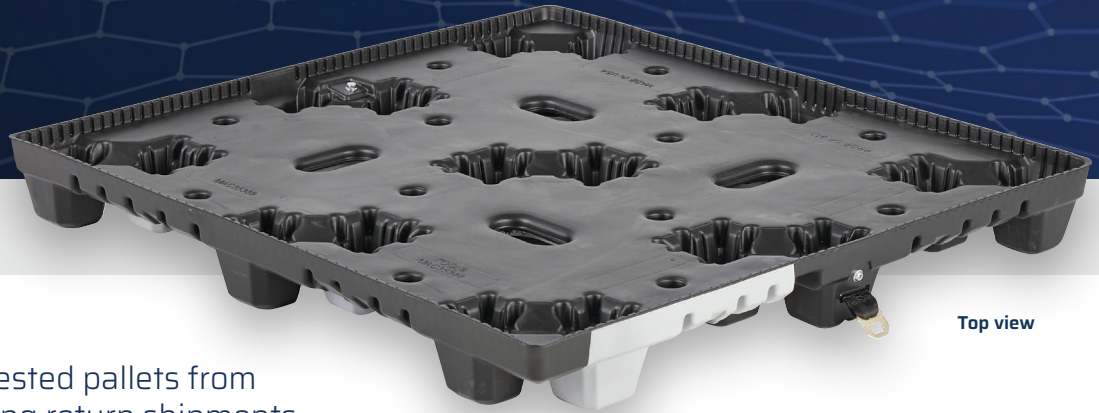
#### 01 / Details

#### FEATURES

- Anti-jam design keeps nested pallets from resting on retractors during return shipments
- Mirror image design
- Conveyable

#### OPTIONS

- Cargo belt & buckle
- Stripe identification
- Identification labels (4) locations
- Trays can be designed to interlock with top pallet deck
- Drain holes
- Hand holes



Top view



Bottom View



Mirror Image Design



Nestable Design



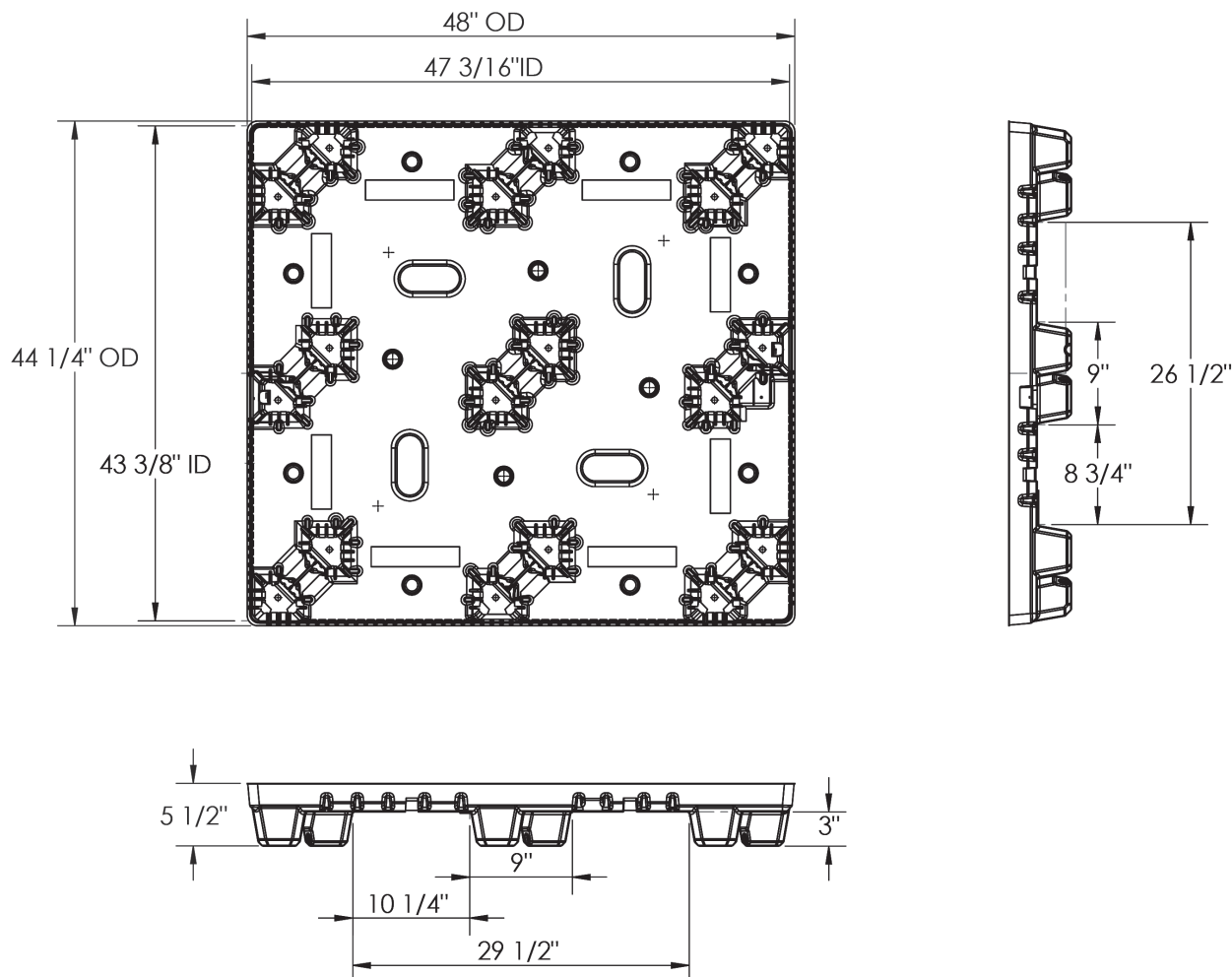
2" Webbing/ 59" Min.  
Length Easy Grip Loops  
Locations Available  
in Length and/or Width

#### 02 / Specifications

PRODUCT #	DESCRIPTION	DIMENSIONS			WEIGHT	COLOR	PALLET PER STACK	SKIDS PER TLD	53' TLD
		L	W	H					
T44.25x48	Twin Sheet Light Duty Pallet	48" 1,219 mm	44.25" 1,124 mm	5.5" 140 mm	20 lbs 9 kg	Black	35	24	840

# T44.25x48 Pallet

## SPECIFICATIONS



### PALLET ADVANTAGES

- Environmentally Friendly
- ISPM 15 Exempt
- Long Service Life



Easy  
Clean



Sanitary



Weather  
Resistant



Impact  
Resistant



4-Way  
Forklift/jack  
Entry



Recycle

TriEnda publishes standard guidelines for its products, based on its testing standards, and, as such, these guidelines do not constitute any warranty related to each customer's individual application. The material handling industry has not standardized on test methodology and rating criteria for each individual product. All TriEnda products are sold with the understanding that the customer will validate for themselves the suitability of the product for their specific application. As each product application is unique, the customer assumes all risks associated with the determination and actual use of the pallet.

