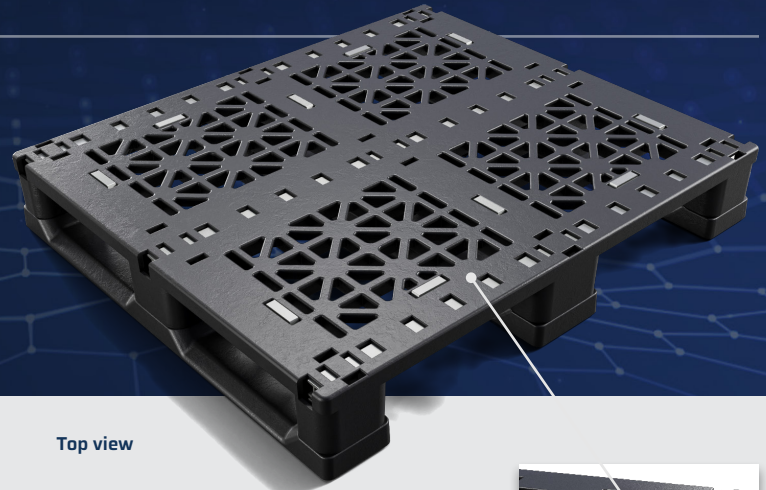


# Greystone Pallet

37x32



Top view

## 01 / Details

### FEATURES

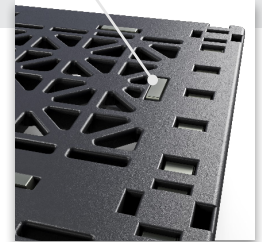
- 100% Recycled Plastic (HDPE)
- Injection Molded
- Sanitary and easy to clean
- Strong and long lifespan
- Reusable and recyclable
- Impact and weather resistant
- Stackable and Conveyable
- 4-way entry
- Optional rod configurations

### OPTIONS

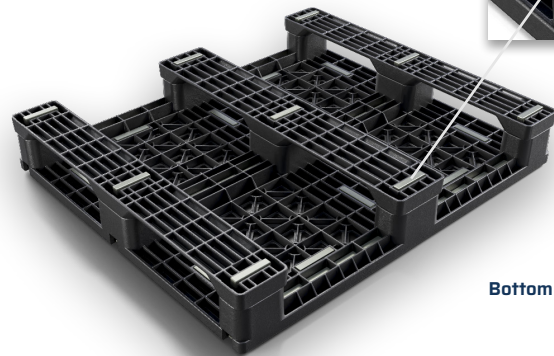
- Alternative material blends and colors for custom applications
- Custom trimming of runners for use with special material handling equipment
- Ink stamping for company logos and branding



Reinforcement Rods



Grommets



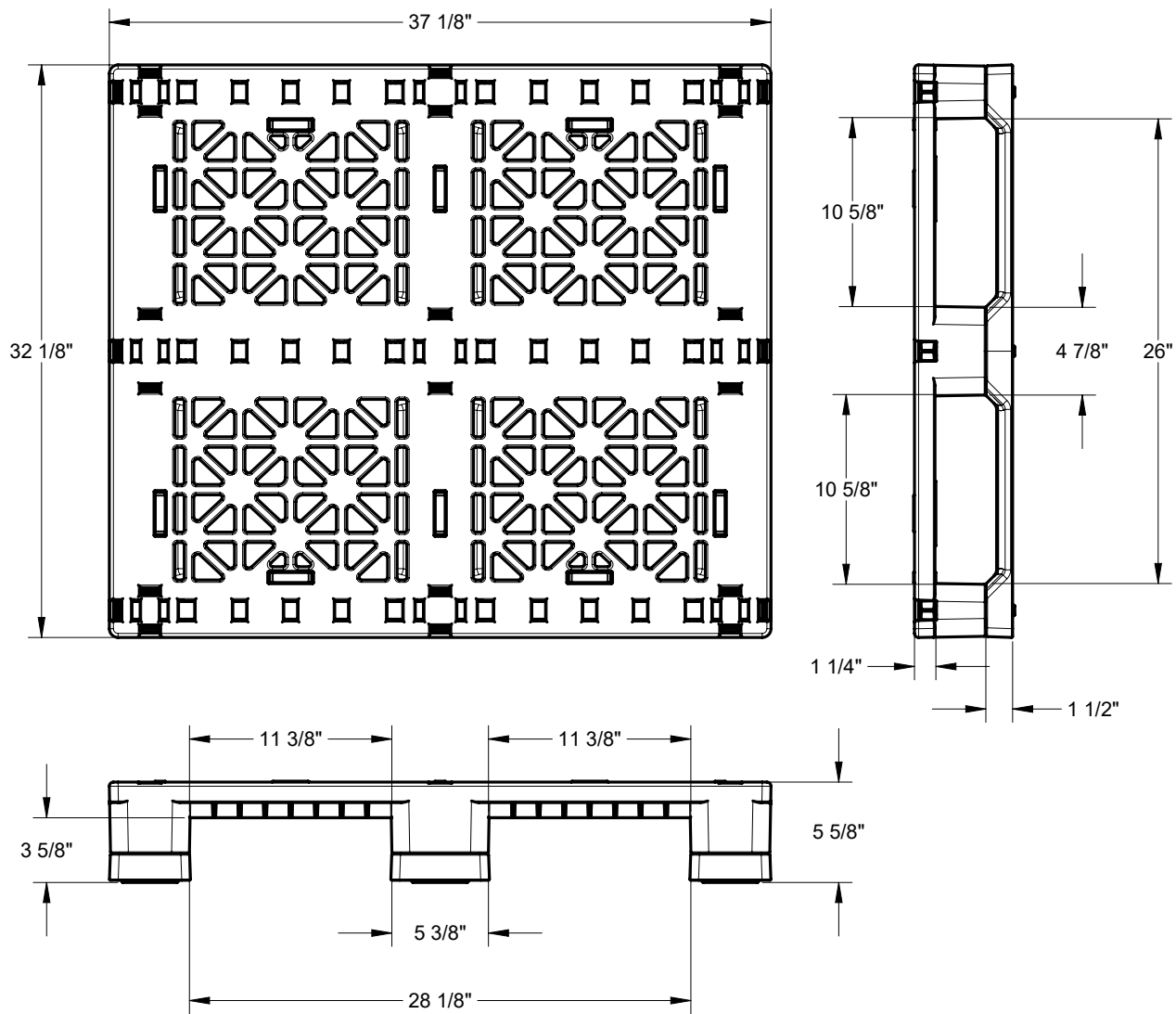
Bottom View

## 02 / Specifications

PRODUCT	DESCRIPTION	DIMENSIONS			WEIGHT	COLOR	RATINGS			QTY 53' TLD	QTY 40' SC
		L	W	H			STATIC	DYNAMIC	RACKING		
GS.3732.3R0	(3) RUNNER (0) ROD	37"	32"	5.5"	36 lbs.	BLK	30,000 lbs.	5,000 lbs.	1,000 lbs.	864	476
GS.3732.3R3	(3) RUNNER (3) ROD	37"	32"	5.5"	40 lbs.	BLK	30,000 lbs.	5,000 lbs.	2,500 lbs.	864	476

# Greystone Pallet 37x32

## SPECIFICATIONS



### PALLET ADVANTAGES

- Environmentally Friendly
- ISPM 15 Exempt
- Long Service Life



Easy  
Clean



Sanitary



Weather  
Resistant



Impact  
Resistant



4-Way  
Forklift/jack  
Entry



Recycle

TriEnda publishes standard guidelines for its products, based on its testing standards, and, as such, these guidelines do not constitute any warranty related to each customer's individual application. The material handling industry has not standardized on test methodology and rating criteria for each individual product. All TriEnda products are sold with the understanding that the customer will validate for themselves the suitability of the product for their specific application. As each product application is unique, the customer assumes all risks associated with the determination and actual use of the pallet.



### CONTACT US

N7660 Industrial Road Portage, WI 53901  
www.triend.com | sales@triend.com  
1-800-356-8150

**PALLET  
BUYBACK  
PROGRAM**

