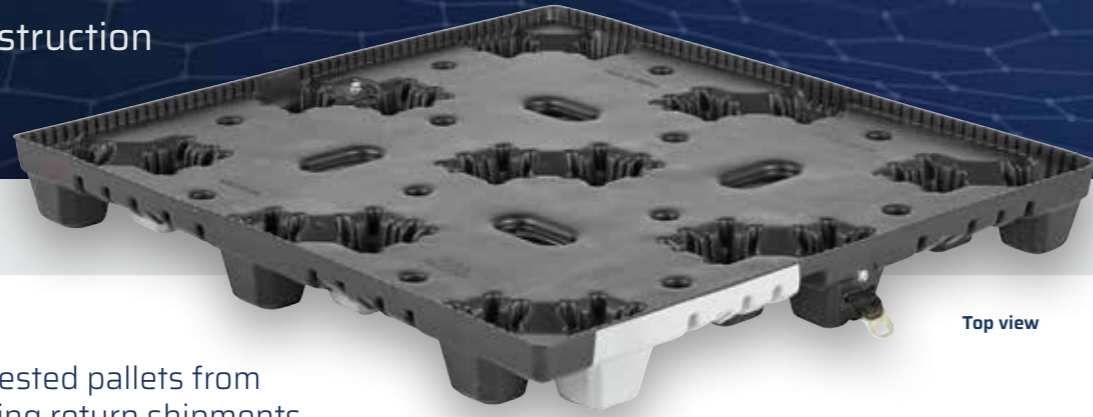


T44.25x48 Pallet

LIGHT Duty Thermoformed
HDPE Twin Sheet Construction



Top view



Bottom View



Mirror Image Design



Nestable Design



2" Webbing/ 59" Min. Length Easy Grip Loops
Locations Available in Length and/or Width

01 / Details

FEATURES

- Anti-jam design keeps nested pallets from resting on retractors during return shipments
- Mirror image design
- Conveyable

OPTIONS

- Cargo belt & buckle
- Stripe identification
- Identification labels (4) locations
- Trays can be designed to interlock with top pallet deck
- Drain holes
- Hand holes

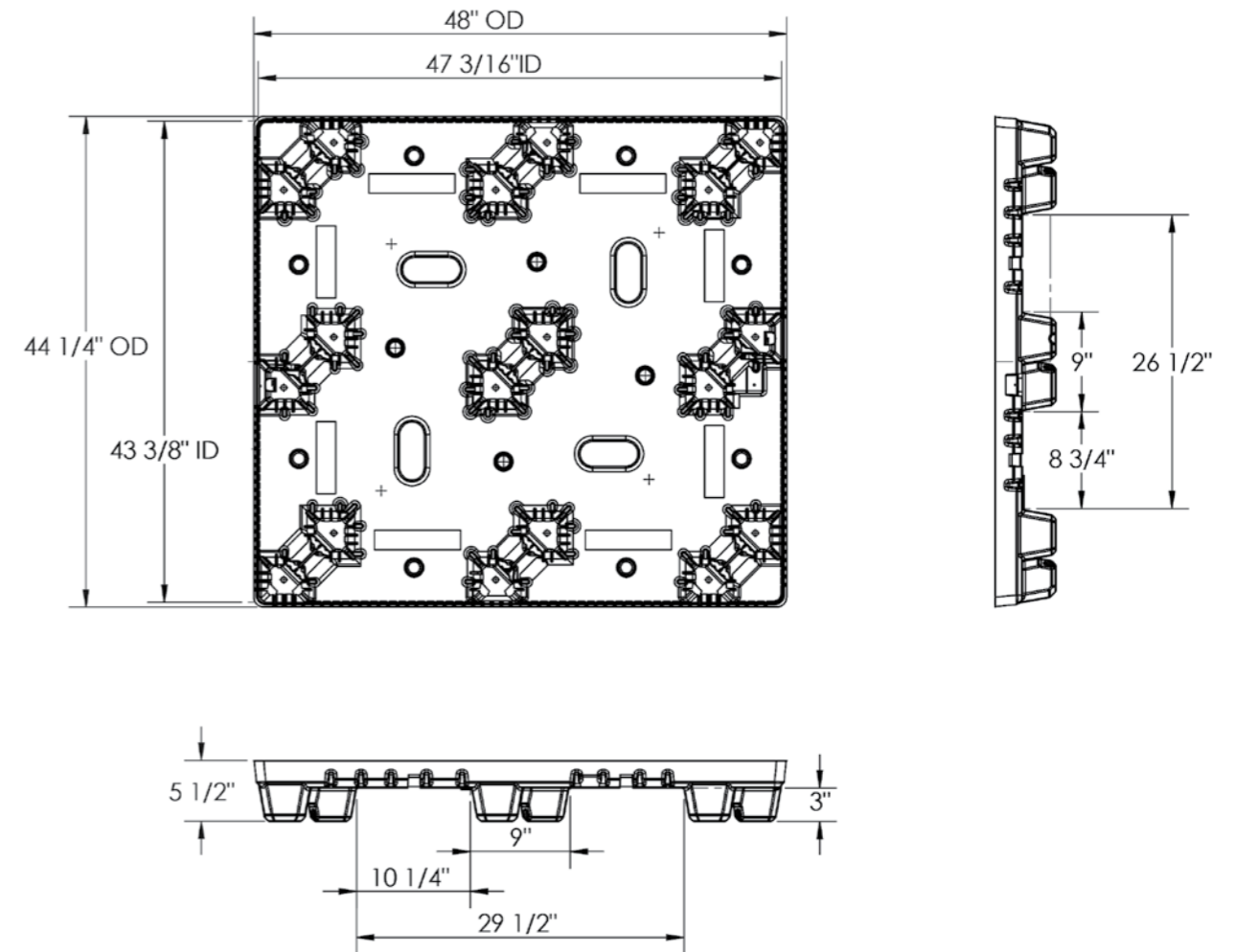
02 / Specifications

PRODUCT #	DESCRIPTION	DIMENSIONS			WEIGHT	COLOR	PALLETS PER STACK	SKIDS PER TLD	53' TLD
		L	W	H					
T44.25x48	Twin Sheet Light Duty Pallet	48" 1,219 mm	44.25" 1,124 mm	5.5" 140 mm	20 lbs 9 kg	Black	35	24	840

Performance characteristics vary with applications. To optimize nominal specifications, loads must be evenly distributed to reach capacity. Load construction, support conditions, transportation, load retention, user facility and temperature are factors that affect pallet capacity.

T44.25x48 Pallet

SPECIFICATIONS



PALLET ADVANTAGES

- Environmentally Friendly
- ISPM 15 Exempt
- Long Service Life



TriEnda publishes standard guidelines for its products, based on its testing standards, and, as such, these guidelines do not constitute any warranty related to each customer's individual application. The material handling industry has not standardized on test methodology and rating criteria for each individual product. All TriEnda products are sold with the understanding that the customer will validate for themselves the suitability of the product for their specific application. As each product application is unique, the customer assumes all risks associated with the determination and actual use of the pallet.

