

Metal Racking

Custom Returnable Shipping Racks

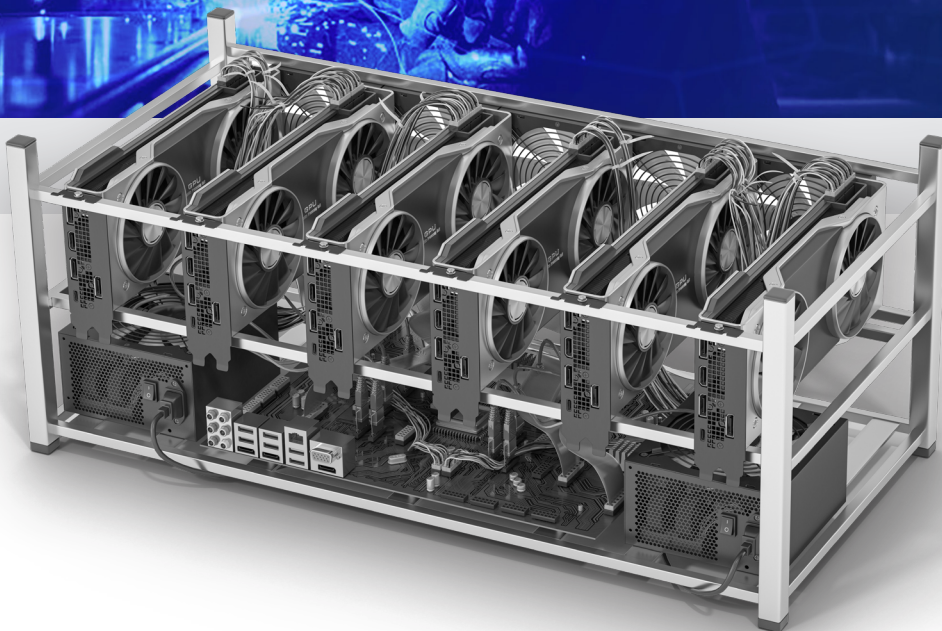
01 / Features

INDUSTRIES

- Automotive OEM
- Tier 1 Suppliers
- Agriculture
- Heavy truck
- Construction
- Recreational Vehicles

ADVANTAGES

- Arlington, Texas plant location reduces freight spend to southern and western locations by up to 75%
- Leader in automotive material handling and dunnage
- Design and engineering solutions



Turn Key Solutions - integrating steel and thermoformed dunnage



Complex Steel Racks with various forms of dunnage



Variety of Painted Finishes

02 / Capabilities



85,000 SQUARE FOOT
Custom Metal Fabrication Facility. Our state of the art plant is located in Arlington, Texas.



ISO 9001
ISO 9001 is our global standard for quality management systems that ensures consistent product and service quality.



AWS Welding Standards
All welding will be in accordance to American Welding Society D1.1.



FINISHING
Powdercoat, wet coating, hot-dip galvanized and plating.



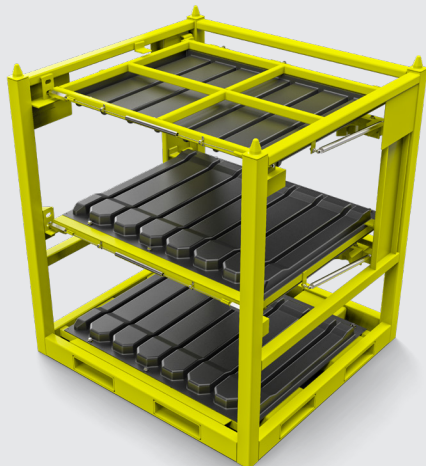
LASER CUTTING
Our sheet metal and tube laser cutting capabilities allow us to easily fabricate complex parts.



REFURBISHING
TriEnda is able to provide rework and repair for your existing racking. Save thousands of dollars in refurbishment by utilizing our expertise.

Metal Racking

PRODUCT EXAMPLES



Heavy Duty



OEM Preferred



Turn Key Solutions



Ideal Location



Drafting Capabilities

TriEnda publishes general guidelines for our metal racking systems based on internal testing protocols. These guidelines are not intended to serve as a warranty or guarantee for any specific customer application. The material handling and storage industry does not maintain universal standards for testing methods or rating criteria across all racking solutions. All of our products are provided with the understanding that customers are responsible for evaluating the suitability of each racking system for their particular use case.



CONTACT US

N7660 Industrial Road Portage, WI 53901
www.triend.com/metal-racking • sales@triend.com
1-313-296-6960